

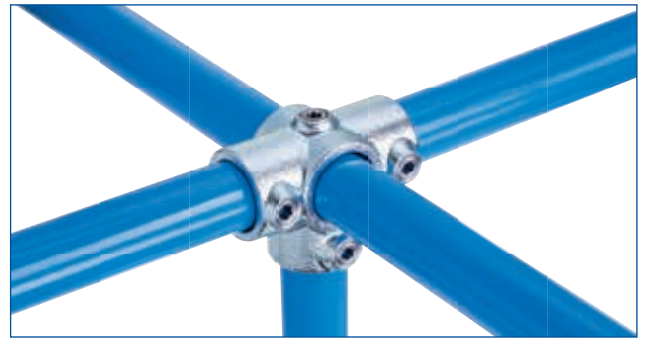
# NORMA **Tube Clamp Fittings**



# NORMA Tube Clamp Fittings

## Description

NORMA's Tube Clamp Fittings are very quick and easy to assemble. Our clamps are made from a malleable iron base material, hot-dip galvanized for a durable and corrosion-resistant finish. The screws are made from stainless steel and a simple hexagonal key can be used to assemble the clamp on the tube.



## Characteristics and benefits

Made of malleable galvanized iron according to the standard EN ISO 1461 TÜV certified to ensure the strength, quality and conformity of production.

- Stainless steel screws
- Warranty up to 1500 N/m load
- No welding, so no fire permit required
- No threading, no bolting
- Can be assembled with a simple hexagonal wrench
- A versatile system that allows changes on site
- Easy to install, no special workforce required
- Can be painted

## Uses

NORMA Tube Clamp Fittings can be easily assembled on pipes, in order to create safety systems, or for installations such as:

- Handrails-Safety rails / Protective barriers
- Fall protection
- Other applications for safety work
- Fixing of railings
- Machinery guards
- Racks and store fixtures
- Playgrounds
- Access platforms for outdoor facades and/or roofs

## Buildings



## Industry

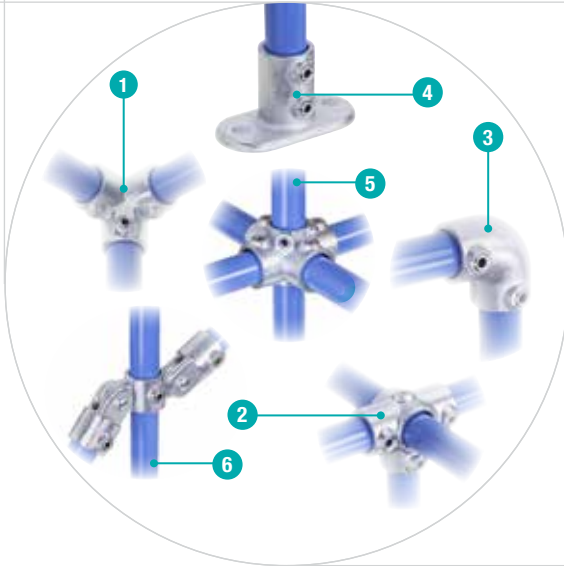


## Water treatment



## Communities and public spaces





- 1** 3 ways 90° elbow
- 2** Side outlet tee
- 3** 90° elbow
- 4** Railing base flange
- 5** Four way cross
- 6** Double swivel combination

## Tube clamp fittings for safety systems

Made of malleable galvanized iron to ensure strength, quality and conformity of production. NORMA Tube Clamp Fittings can be easily assembled on pipes in order to create safety systems.



NORMAFIX®

### Advantages at a glance

- Stainless steel screw
- Warranty up to 1500 N/m load
- No welding, so no fire permits required
- No threading, no bolting
- Can be assembled with a simple hexagonal key
- A versatile system that allows changes on site
- Can be painted

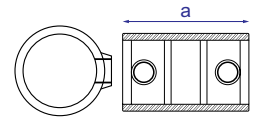
### Applications

- Handrails
- Safety rails/Protective barriers
- Fall protections
- Other applications for safety work
- Fix railings
- Machinery guard
- Playgrounds

### Materials

- Malleable galvanized iron

## Sleeve joint



### NORMAFIX® SLEEVE JOINT

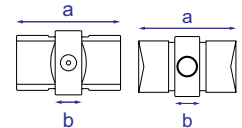
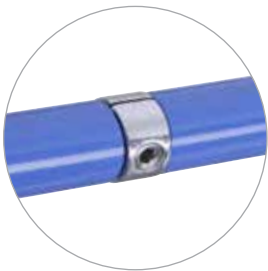
Designation	External Ø of clamp (mm)	Internal Ø of clamp (mm)	a mm	Weight (gram per piece)	Malleable galvanized iron Product No.
SLEEVE JOINT 42.4	42.4	32	100	0.560	0819 6301 042
SLEEVE JOINT 48.3	48.3	40	100	0.590	0819 6301 048

Additional diameters on request



Refer to page 191.

## Expanding connector



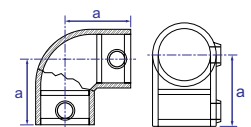
### NORMAFIX® EXPANDING CONNECTOR

Designation	External Ø of clamp (mm)	Internal Ø of clamp (mm)	a mm	b mm	Weight (gram per piece)	Malleable galvanized iron Product No.
EXPANDING CONNECTOR 33.7	33.7	25	78	20	0.250	0819 6302 034
EXPANDING CONNECTOR 42.4	42.4	32	78	20	0.360	0819 6302 042
EXPANDING CONNECTOR 48.3	48.3	40	78	20	0.490	0819 6302 048



Refer to page 191.

## 90° elbow



### NORMAFIX® 90° ELBOW

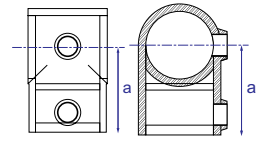
Designation	External Ø of clamp (mm)	Internal Ø of clamp (mm)	a mm	Weight (gram per piece)	Malleable galvanized iron Product No.
90° ELBOW 33.7	33.7	25	46	0.380	0819 6303 034
90° ELBOW 42.4	42.4	32	60	0.630	0819 6303 042
90° ELBOW 48.3	48.3	40	68	0.740	0819 6303 048

Additional diameters on request



Refer to page 191.

### Short T



#### NORMAFIX® SHORT T

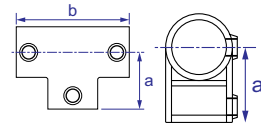
Designation	External Ø of clamp (mm)	Internal Ø of clamp (mm)	a mm	Weight (gram per piece)	Malleable galvanized iron Product No.
SHORT TEE 33.7	33.7	25	46	0.320	0819 6304 034
SHORT TEE 42.4	42.4	32	60	0.510	0819 6304 042
SHORT TEE 48.3	48.3	40	68	0.610	0819 6304 048

Additional diameters on request



Refer to page 191.

### Long T



#### NORMAFIX® LONG T

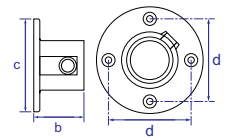
Designation	External Ø of clamp (mm)	Internal Ø of clamp (mm)	a mm	b mm	Weight (gram per piece)	Malleable galvanized iron Product No.
LONG TEE 33.7	33.7	25	46	92	0.540	0819 6305 034
LONG TEE 42.4	42.4	32	60	120	0.840	0819 6305 042
LONG TEE 48.3	48.3	40	68	135	1.050	0819 6305 048

Additional diameters on request



Refer to page 191.

### Wall flange



#### NORMAFIX® WALL FLANGE

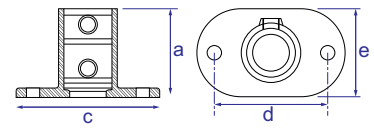
Designation	External Ø of clamp (mm)	Internal Ø of clamp (mm)	b mm	c mm	d mm	Weight (gram per piece)	Malleable galvanized iron Product No.
WALL FLANGE 33.7	33.7	25	48	89	65	0.490	0819 6306 034
WALL FLANGE 42.4	42.4	32	51	102	76	0.700	0819 6306 042
WALL FLANGE 48.3	48.3	40	59	114	88.5	0.880	0819 6306 048

Additional diameters on request



Refer to page 191.

### Railing base flange



#### NORMAFIX® RAILING BASE FLANGE

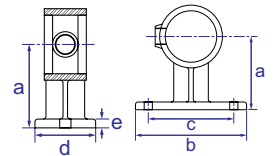
Designation	External Ø of clamp (mm)	Internal Ø of clamp (mm)	a mm	c mm	d mm	e mm	Weight (gram per piece)	Malleable galvanized iron Product No.
RAILING BASE FLANGE 33.7	33.7	25	71	127	89	62	0.770	0819 6307 034
RAILING BASE FLANGE 42.4	42.4	32	84	139	101	72	1.030	0819 6307 042
RAILING BASE FLANGE 48.3	48.3	40	89	152	114	86	1.270	0819 6307 048

Additional diameters on request



Refer to page 191.

### Handrail bracket



#### NORMAFIX® HANDRAIL BRACKET

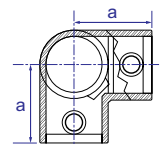
Designation	External Ø of clamp (mm)	Internal Ø of clamp (mm)	a mm	b mm	c mm	d mm	e mm	Weight (gram per piece)	Malleable galvanized iron Product No.
HANDRAIL BRACKET 33.7	33.7	25	57	80	62	44	7	0.380	0819 6308 034
HANDRAIL BRACKET 42.4	42.4	32	62	102	82.5	45	7	0.510	0819 6308 042
HANDRAIL BRACKET 48.3	48.3	40	70	107	82.5	50	7	0.610	0819 6308 048

Additional diameters on request



Refer to page 191.

### 3 ways 90° elbow



#### NORMAFIX® 3 WAYS 90° ELBOW

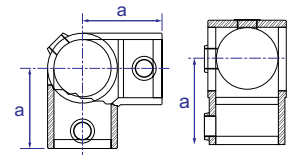
Designation	External Ø of clamp (mm)	Internal Ø of clamp (mm)	a mm	Weight (gram per piece)	Malleable galvanized iron Product No.
3 WAYS 90° ELBOW 33.7	33.7	25	48	0.520	0819 6309 034
3 WAYS 90° ELBOW 42.4	42.4	32	60	0.850	0819 6309 042
3 WAYS 90° ELBOW 48.3	48.3	40	68	1.030	0819 6309 048

Additional diameters on request



Refer to page 191.

### Corner C/W through tube



#### NORMAFIX® CORNER C/W THROUGH TUBE

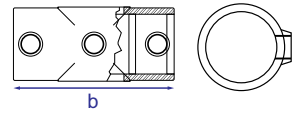
Designation	External Ø of clamp (mm)	Internal Ø of clamp (mm)	a mm	Weight (gram per piece)	Malleable galvanized iron Product No.
CORNER C/W THROUGH TUBE 33.7	33.7	25	46	0.410	0819 6310 034
CORNER C/W THROUGH TUBE 42.4	42.4	32	60	0.620	0819 6310 042
CORNER C/W THROUGH TUBE 48.3	48.3	40	68	0.780	0819 6310 048

Additional diameters on request



Refer to page 191.

### Two socket cross



#### NORMAFIX® TWO SOCKET CROSS

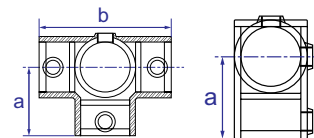
Designation	External Ø of clamp (mm)	Internal Ø of clamp (mm)	a mm	Weight (gram per piece)	Malleable galvanized iron Product No.
TWO SOCKET CROSS 33.7	33.7	25	92	0.410	0819 6311 034
TWO SOCKET CROSS 42.4	42.4	32	120	0.640	0819 6311 042
TWO SOCKET CROSS 48.3	48.3	40	135	0.770	0819 6311 048

Additional diameters on request



Refer to page 191.

### Side outlet tee



#### NORMAFIX® SIDE OUTLET TEE

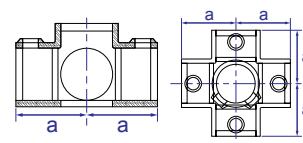
Designation	External Ø of clamp (mm)	Internal Ø of clamp (mm)	a mm	b mm	Weight (gram per piece)	Malleable galvanized iron Product No.
SIDE OUTLET TEE 33.7	33.7	25	46	92	0.470	0819 6312 034
SIDE OUTLET TEE 42.4	42.4	32	60	120	0.790	0819 6312 042
SIDE OUTLET TEE 48.3	48.3	40	68	136	0.980	0819 6312 048

Additional diameters on request



Refer to page 191.

## Four way cross and center



### NORMAFIX® FOUR WAY CROSS AND CENTER

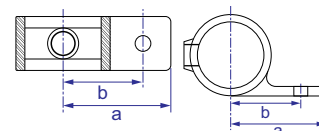
Designation	External Ø of clamp (mm)	Internal Ø of clamp (mm)	a mm	Weight (gram per piece)	Malleable galvanized iron Product No.
FOUR WAY CROSS AND CENTER 33.7	33.7	25	46	0.63	0819 6313 034
FOUR WAY CROSS AND CENTER 42.4	42.4	32	60	1.00	0819 6313 044
FOUR WAY CROSS AND CENTER 48.3	48.3	40	68	1.33	0319 6313 048

Additional diameters on request



Refer to page 191.

## Fixing pad



### NORMAFIX® FIXING PAD

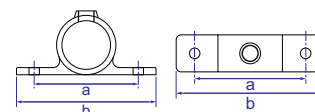
Designation	External Ø of clamp (mm)	Internal Ø of clamp (mm)	a mm	b mm	Weight (gram per piece)	Malleable galvanized iron Product No.
FIXING PAD 42.4	42.4	32	70	52	0.340	0819 6314 042
FIXING PAD 48.3	48.3	40	68	135	1.050	0819 6314 048

Additional diameters on request



Refer to page 191.

## Double wall coupler



### NORMAFIX® DOUBLE WALL COUPLER

Designation	External Ø of clamp (mm)	Internal Ø of clamp (mm)	a mm	b mm	Weight (gram per piece)	Malleable galvanized iron Product No.
DOUBLE WALL COUPLER 42.4	42.4	32	95	130	0.410	0819 6315 042
DOUBLE WALL COUPLER 48.3	48.3	40	104	140	0.470	0819 6315 048

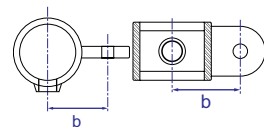
Additional diameters on request



Refer to page 191.



### Male swivel



#### NORMAFIX® MALE SWIVEL

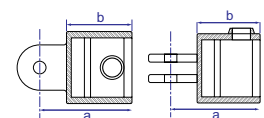
Designation	External Ø of clamp (mm)	Internal Ø of clamp (mm)	b mm	Weight (gram per piece)	Malleable galvanized iron Product No.
MALE SWIVEL 42.4	42.4	32	48	0.350	0819 6316 042
MALE SWIVEL 48.3	48.3	40	53	0.400	0819 6316 048

Additional diameters on request



Refer to page 191.

### Female swivel



#### NORMAFIX® FEMALE SWIVEL

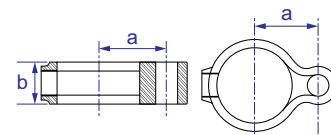
Designation	External Ø of clamp (mm)	Internal Ø of clamp (mm)	a mm	b mm	Weight (gram per piece)	Malleable galvanized iron Product No.
FEMALE SWIVEL 42.4	42.4	32	69	46	0.470	0819 6317 042
FEMALE SWIVEL 48.3	48.3	40	77	55	0.540	0819 6317 048

Additional diameters on request



Refer to page 191.

### Gate eye



#### NORMAFIX® GATE EYE

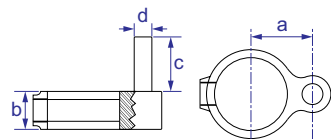
Designation	External Ø of clamp (mm)	Internal Ø of clamp (mm)	a mm	b mm	Weight (gram per piece)	Malleable galvanized iron Product No.
GATE EYE 42.4	42.4	32	38	25	0.190	0819 6318 042
GATE EYE 48.3	48.3	40	41	25	0.220	0819 6318 048

Additional diameters on request



Refer to page 191.

### Gate hinge



#### NORMAFIX® GATE HINGE

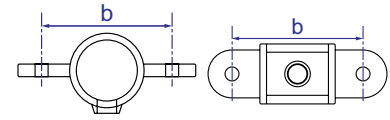
Designation	External Ø of clamp (mm)	Internal Ø of clamp (mm)	a mm	b mm	c mm	d mm	Weight (gram per piece)	Malleable galvanized iron Product No.
GATE HINGE 42.4	42.4	32	38	25	38	12	0.290	0819 6319 042
GATE HINGE 48.3	48.3	40	25	25	38	12	0.310	0819 6319 048

Additional diameters on request



Refer to page 191.

## Double male swivel



### NORMAFIX® DOUBLE MALE SWIVEL

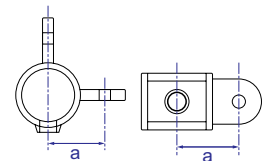
Designation	External Ø of clamp (mm)	Internal Ø of clamp (mm)	b mm	Weight (gram per piece)	Malleable galvanized iron Product No.
DOUBLE MALE SWIVEL 42.4	42.4	32	95	0.420	0819 6320 042
DOUBLE MALE SWIVEL 48.3	48.3	40	105	0.490	0819 6320 048

Additional diameters on request



Refer to page 191.

## 90° corner male swivel



### NORMAFIX® 90° CORNER MALE SWIVEL

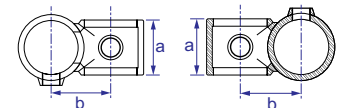
Designation	External Ø of clamp (mm)	Internal Ø of clamp (mm)	a mm	Weight (gram per piece)	Malleable galvanized iron Product No.
90° CORNER MALE SWIVEL 42.4	42.4	32	48	0.410	0819 6321 042
90° CORNER MALE SWIVEL 48.3	48.3	40	53	0.470	0819 6321 048

Additional diameters on request



Refer to page 191.

## 90° Crossover



### NORMAFIX® 90° CROSSOVER

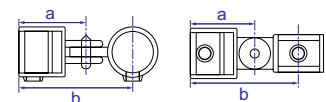
Designation	External Ø of clamp (mm)	Internal Ø of clamp (mm)	a mm	b mm	Weight (gram per piece)	Material: Malleable galvanized iron Product No.
90° CROSSOVER 42.4	42.4	32	46	49.5	0.490	0819 6322 042
90° CROSSOVER 48.3	48.3	40	51	55	0.550	0819 6322 048

Additional diameters on request



Refer to page 191.

## Single swivel combination



### NORMAFIX® SINGLE SWIVEL COMBINATION

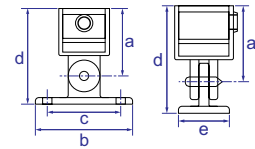
Designation	External Ø of clamp (mm)	Internal Ø of clamp (mm)	a mm	b mm	Weight (gram per piece)	Malleable galvanized iron Product No.
SINGLE SWIVEL COMBINATION 42.4	42.4	32	69	117	0.830	0819 6323 042
SINGLE SWIVEL COMBINATION 48.3	48.3	40	77	130	0.890	0819 6323 048

Additional diameters on request



Refer to page 191.

### Base swivel combination



#### NORMAFIX® BASE SWIVEL COMBINATION

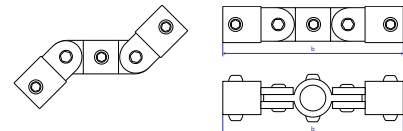
Designation	External Ø of clamp (mm)	Internal Ø of clamp (mm)	a mm	b mm	c mm	d mm	e mm	Weight (gram per piece)	Malleable galvanized iron Product No.
BASE SWIVEL COMBINATION 42.4	42.4	32	69	112	85	98	52	0.860	0819 6324 042
BASE SWIVEL COMBINATION 48.3	48.3	40	77	112	85	109	52	0.970	0819 6324 048

Additional diameters on request



Refer to page 191.

### Double swivel combination



#### NORMAFIX® DOUBLE SWIVEL COMBINATION

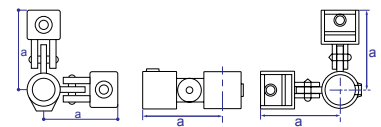
Designation	External Ø of clamp (mm)	Internal Ø of clamp (mm)	b mm	Weight (gram per piece)	Malleable galvanized iron Product No.
DOUBLE SWIVEL COMBINATION 42.4	42.4	32	228	1.40	0819 6325 042
DOUBLE SWIVEL COMBINATION 48.3	48.3	40	259	1.66	0819 6325 048

Additional diameters on request



Refer to page 191.

### 90° Corner swivel combination



#### NORMAFIX® 90° CORNER SWIVEL COMBINATION

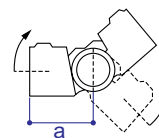
Designation	External Ø of clamp (mm)	Internal Ø of clamp (mm)	a mm	Weight (gram per piece)	Malleable galvanized iron Product No.
90° CORNER SWIVEL COMBINATION 42.4	42.4	32	117	0.440	0819 6326 042
90° CORNER SWIVEL COMBINATION 48.3	48.3	40	130	0.660	0819 6326 048

Additional diameters on request



Refer to page 191.

### Short tee swivel



#### NORMAFIX® SHORT TEE SWIVEL

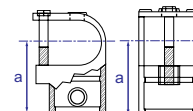
Designation	External Ø of clamp (mm)	Internal Ø of clamp (mm)	a mm	Weight (gram per piece)	Malleable galvanized iron Product No.
SHORT TEE SWIVEL 42.4	42.4	32	73	1.400	0819 6327 042
SHORT TEE SWIVEL 48.3	48.3	40	93	1.650	0819 6327 048

Additional diameters on request



Refer to page 191.

### Clamp on tee



#### NORMAFIX® CLAMP ON TEE

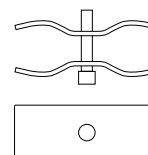
Designation	External Ø of clamp (mm)	Internal Ø of clamp (mm)	a mm	Weight (gram per piece)	Malleable galvanized iron Product No.
CLAMP ON TEE 42.4	42.4	32	67	0.580	0819 6328 042
CLAMP ON TEE 48.3	48.3	40	76.5	0.680	0819 6328 048

Additional diameters on request



Refer to page 191.

### Fence building clamp





#### NORMAFIX® FENCE BUILDING CLAMP


Designation	Diameter in mm	Electrolytic yellow passivated Product No.
FENCE BUILDING CLAMP	48	0819 6333 048





Refer to page 191.


SLEEVE JOINT		
	External Ø of clamp (mm)	Internal Ø of clamp (mm)
	42,4	32
	48,3	40


EXPANDING CONNECTOR		
	External Ø of clamp (mm)	Internal Ø of clamp (mm)
	33,7	25
	42,4	32
	48,3	40


90° ELBOW		
	External Ø of clamp (mm)	Internal Ø of clamp (mm)
	33,7	25
	42,4	32
	48,3	40


SHORT T		
	External Ø of clamp (mm)	Internal Ø of clamp (mm)
	33,7	25
	42,4	32
	48,3	40


LONG T		
	External Ø of clamp (mm)	Internal Ø of clamp (mm)
	33,7	25
	42,4	32
	48,3	40


BASE FLANGE		
	External Ø of clamp (mm)	Internal Ø of clamp (mm)
	33,7	25
	42,4	32
	48,3	40


RAILING BASE FLANGE		
	External Ø of clamp (mm)	Internal Ø of clamp (mm)
	33,7	25
	42,4	32
	48,3	40


HANDRAIL BRACKET		
	External Ø of clamp (mm)	Internal Ø of clamp (mm)
	33,7	25
	42,4	32
	48,3	40


3 WAYS 90° ELBOW		
	External Ø of clamp (mm)	Internal Ø of clamp (mm)
	33,7	25
	42,4	32
	48,3	40


CORNER C/W THRO TUBE		
	External Ø of clamp (mm)	Internal Ø of clamp (mm)
	33,7	25
	42,4	32
	48,3	40


TWO SOCKET CROSS		
	External Ø of clamp (mm)	Internal Ø of clamp (mm)
	33,7	25
	42,4	32
	48,3	40


SIDE OUTLET TEE		
	External Ø of clamp (mm)	Internal Ø of clamp (mm)
	33,7	25
	42,4	32
	48,3	40


FOUR WAY CROSS		
	External Ø of clamp (mm)	Internal Ø of clamp (mm)
	33,7	25
	42,4	32
	48,3	40


FIXING PAD		
	External Ø of clamp (mm)	Internal Ø of clamp (mm)
	42,4	32
	48,3	40

DOUBLE WALL COUPLER		
	External Ø of clamp (mm)	Internal Ø of clamp (mm)
	42,4	32
	48,3	40

MALE SWIVEL		
	External Ø of clamp (mm)	Internal Ø of clamp (mm)
	42,4	32
	48,3	40


FEMALE SWIVEL		
	External Ø of clamp (mm)	Internal Ø of clamp (mm)
	42,4	32
	48,3	40


GATE EYE		
	External Ø of clamp (mm)	Internal Ø of clamp (mm)
	42,4	32
	48,3	40


GATE HINGE		
	External Ø of clamp (mm)	Internal Ø of clamp (mm)
	42,4	32
	48,3	40


DOUBLE MALE SWIVEL		
	External Ø of clamp (mm)	Internal Ø of clamp (mm)
	42,4	32
	48,3	40


90° CORNER MALE SWIVEL		
	External Ø of clamp (mm)	Internal Ø of clamp (mm)
	42,4	32
	48,3	40


90° CROSSOVER		
	External Ø of clamp (mm)	Internal Ø of clamp (mm)
	42,4	32
	48,3	40


SINGLE SWIVEL COMBINATION		
	External Ø of clamp (mm)	Internal Ø of clamp (mm)
	42,4	32
	48,3	40

BASE SWIVEL COMBINATION		
	External Ø of clamp (mm)	Internal Ø of clamp (mm)
	42,4	32
	48,3	40

DOUBLE SWIVEL COMBINATION		
	External Ø of clamp (mm)	Internal Ø of clamp (mm)
	42,4	32
	48,3	40

90° CORNER SWIVEL COMBINATION		
	External Ø of clamp (mm)	Internal Ø of clamp (mm)
	42,4	32
	48,3	40

SHORT TEE SWIVEL		
	External Ø of clamp (mm)	Internal Ø of clamp (mm)
	42,4	32
	48,3	40

CLAMP ON TEE		
	External Ø of clamp (mm)	Internal Ø of clamp (mm)
	42,4	32
	48,3	40