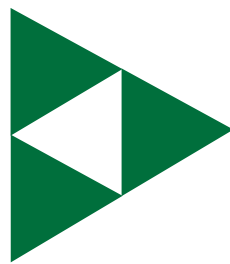


TRIDON

FOR QUALITY, SERVICE & SELECTION, TRUST THE CLAMP PROFESSIONALS

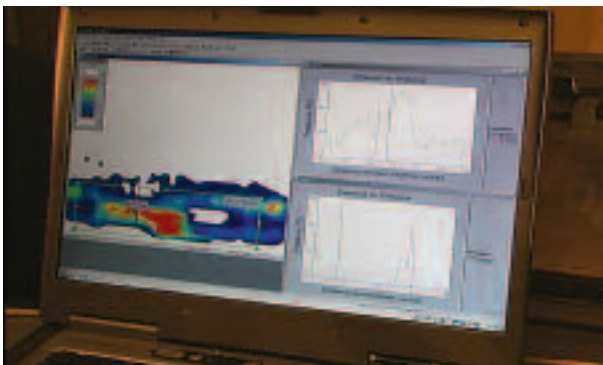


AUTOMOTIVE • HARDWARE • INDUSTRIAL • MARINE • M.R.O. • O.E.M. • PLUMBING



PRODUCT CATALOG

For Quality, Service & Selection, Trust the Clamp Professionals



Founded in 1913, IDEAL – A Tomkins Company is the largest and most trusted clamp manufacturer in North America and has recently expanded its clamp offering to sell directly to European original equipment manufacturers, distributors, warehouses, retailers and groups. As the leading designer and clamp manufacturer of TRIDON® worm gear clamps, we invite you to explore our products and services catalog for automotive, industrial, hardware, plumbing, marine, heavy equipment and specialty hose clamps.

IDEAL is headquartered in St. Augustine, Florida, USA, with additional manufacturing operations in Smyrna, Tennessee, USA; Matamoros, Mexico; and Suzhou, China. Together, these facilities manufacture worm drive hose clamps, high-torque clamps, constant tension clamps, T-Bolts, V-Inserts, No-Hub couplings and a host of specialty and custom clamp products.

Our products and services philosophy promotes engineering ingenuity, market-driving initiatives, and a commitment to excellence. Our advantages include:

- Design and manufacturer engineering expertise
- Material and metallurgical science
- Automated assembly processes
- Advanced screw manufacturing technology
- High-speed stamping
- Automated packing
- Distribution channels

Quality & Engineering

Our commitment to superior quality, environmental responsibility, and process integrity has earned and maintained facility certifications for ISO9001 and 14001, as well as TS16949. Our facilities use only the finest quality AISI certified steel and manufacturing best practices for clamp products you can trust.

We operate with the latest manufacturing equipment and facilities from networked manufacturing complexes to advanced laboratory analysis. Our expertise revolves around a diversified team of engineers and operators equipped with the latest testing labs and machine tuning capabilities. We test and certify our performance to standards and real life conditions for the ultimate product satisfaction.

Our labs and technicians perform temperature tests, salt spray tests, band load and tension tests, calibration tests and often develop custom procedures to fit a customer requirement. We can develop custom designs for any application from band notching and slotting to special finishes and screw head designs. Using 3-D modeling that includes stress and finite elemental analysis, we can help determine the best materials and configuration for your application.

Partnership

TRIDON® clamp brand is a registered trademark of IDEAL – A Tomkins Company. Headquartered in London, Tomkins is a world-class global engineering and manufacturing group with market and technical leadership across two businesses: Industrial & Automotive and Building Products. Its products are sold into a wide variety of end-markets. Tomkins ordinary shares are listed on the London Stock Exchange under the symbol TOMK and also trade in ADR form on the New York Stock Exchange under the symbol TKS. For further information, visit www.tomkins.co.uk.

Let us help you produce or supply your next order for a production line or create a clamp mix for re-sale locations. Send us inquiries in your preferred language. We can connect you with our sales representatives and welcome you to partner with us as you plan your next clamp program.

TRIDON® brand offers:

- Excellent customer service
- Experienced industry engineering talent
- A broad range of high quality products

We offer passionate people partnering to set the global standard of excellence in everything we do. Whether you want a standardized product or specialized attention – we have the team, the facilities and the knowledge to deliver what you want. For quality, service and selection, trust the clamp professionals.

Our Tomkins affiliate companies offer many notable brand names that you may recognize, such as: AirAware™, Amflo®, Camel®, Edelmann®, Gates®, Plews-LubriMatic™, Schrader-Bridgeport®, Stant®, TRIDON®, Tru-Flate®, and Unicoil™.

Geographical Markets:

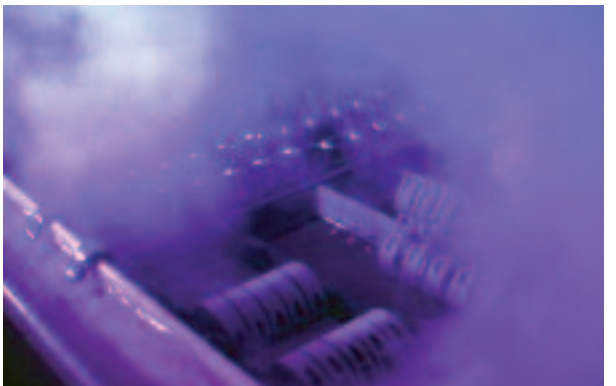
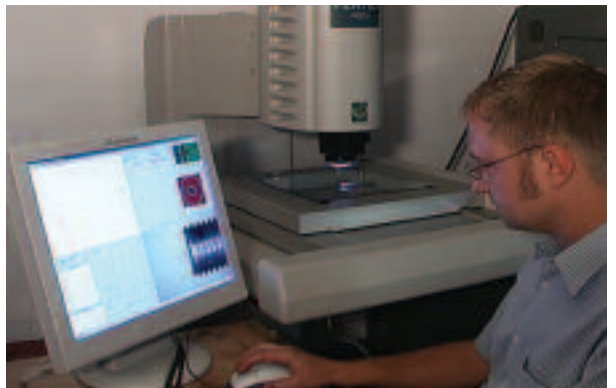
- Europe
- USA/Canada
- Mexico
- Central America
- South America
- Africa
- Asia
- Australia & New Zealand

Industry Markets:

- General replacement
- OEM: Original Equipment Manufacturing
- Automotive
- Heavy Equipment
- Industrial
- Food processing and Sanitation
- Hardware
- Plumbing
- Marine
- Government & Military
- Truck & Engine
- Telecommunications

Learn more about our progress, services and product offerings at:

www.tridonclamps.eu



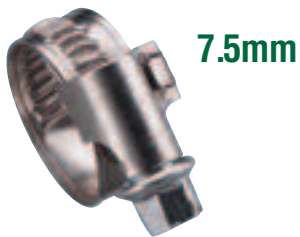
TRIDON® Worm Drive Non-Perforated (Embossed) Band Clamps



12mm



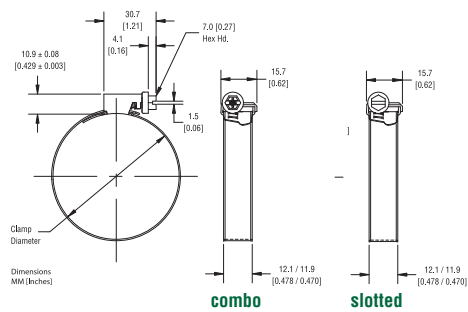
9mm



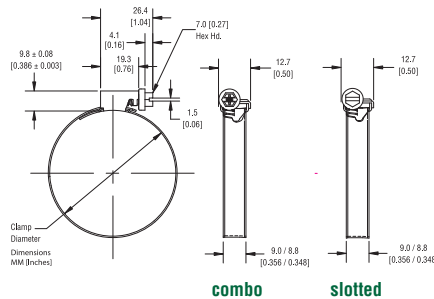
7.5mm

| Series | Band Width | Material Composition | Screw Size and Description |
|--------|---------------|----------------------|-----------------------------------|
| 141 | 12 mm (.47") | W1 | 7 mm screw hex-head combo slotted |
| 142 | 12 mm (.47") | W2 | 7 mm screw hex-head combo slotted |
| 143 | 12 mm (.47") | W3 | 7 mm screw hex-head slotted |
| 144 | 12 mm (.47") | W4 | 7 mm screw hex-head slotted |
| 145 | 12 mm (.47") | W5 | 7 mm screw hex-head slotted |
| 131 | 9 mm (.35") | W1 | 7 mm screw hex-head combo slotted |
| 132 | 9 mm (.35") | W2 | 7 mm screw hex-head combo slotted |
| 133 | 9 mm (.35") | W3 | 7 mm screw hex-head slotted |
| 134 | 9 mm (.35") | W4 | 7 mm screw hex-head slotted |
| 135 | 9 mm (.35") | W5 | 7 mm screw hex-head slotted |
| 122 | 7.5 mm (.29") | W2 | 6 mm screw hex-head combo slotted |

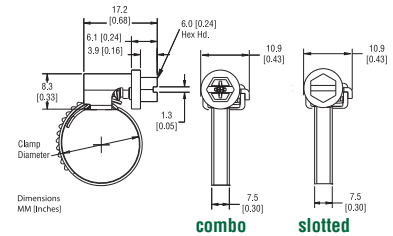
12mm Band



9mm Band



7.5mm Band



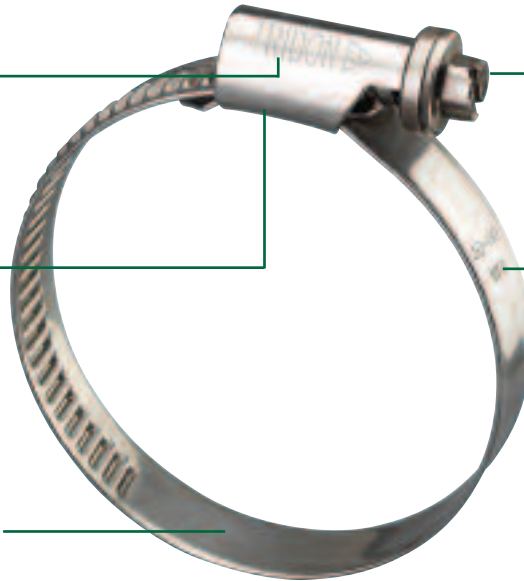
| | Corrosion Resistance | Common Uses | Germany DIN | Europe EN | France AFNOR | UK BS | Russia GOST |
|----|---|---|---|---|---|---|---|
| W1 | Low requirements | Household applications, indoor plumbing work | Zinc Plated Steel | Zinc Plated Steel | Zinc Plated Steel | Zinc Plated Steel | Zinc Plated Steel |
| W2 | Average requirements | Cars, trucks, some mechanical engineering | Band and housing: W3 material; Screw: Zinc Plated Steel | Band and housing: W3 material; Screw: Zinc Plated Steel | Band and housing: W3 material; Screw: Zinc Plated Steel | Band and housing: W3 material; Screw: Zinc Plated Steel | Band and housing: W3 material; Screw: Zinc Plated Steel |
| W3 | Medium requirements | Automotive OE | 1.4016 | X8Cr17 | Z 8 C 17 | 430 S 17 430 S 18 | 12Ch17 |
| W4 | High requirements. Low magnetic permeability | For critical connections in cars such as petrol pipes, close to critical and electronic circuits, top grade mechanical engineering, agricultural machinery, motorbikes, signs, general outdoors, stainless steel chimneys | 1.4301 | X5CrNi1810 | Z7 CN 18-09 | 304 S 15 304 S 18 304 S 31 | 8Ch18Ni10 |
| W5 | Maximum requirements. Salt water resistant. Low magnetic permeability | Close to critical and electronic circuits, shipbuilding, defense technology, food processing, sewage treatment facilities, chemical and mechanical engineering | 1.4571 1.4401 | X6CrNiMoTi17122 X5CrNiMo17122 | Z6 CNDT 17-12-2 Z7 CND 17-12-02 | 320 S 18 320 S 31 316 S 31 | 10Ch17N13M2T |

FEATURES & BENEFITS*

TRIDON stamp on housing for a name you can trust

Cross saddle for more even support on installation and long term band tension

Smooth inside band protects soft hoses against shearing and fray.



Unique screw design and asymmetric housing provides improved housing roll resistance and uniform sealing strength

Material spec and clamping range stamped on band to aid identification

***Meets or exceeds
DIN 3017 standard**

TRIDON® Worm Drive Non-Perforated (Embossed) Band Clamps

| Band Width | Part No. W1 | Part No. W2 | Part No. W3 | Part No. W4 | Part No. W5 | Clamping Range | | Torque Performance | | | | |
|------------|-------------|-------------|-------------|-------------|-------------|----------------|-------------------|--------------------|-----------------|-------------|-----------------------|---------------------------|
| | | | | | | Series-Size | Series-Size | Series-Size | Series-Size | Series-Size | Diameter Min-Max (mm) | Diameter Min-Max (inches) |
| 7.5mm | | 122-012 | | | | | 8-12 | 5/16 - 15/32 | 1.7 | 15 | 3.2 | 28 |
| | | 122-016 | | | | | 10-16 | 13/32 - 5/8 | 1.7 | 15 | 3.2 | 28 |
| | | 122-018 | | | | | 12-18 | 15/32 - 11/16 | 1.7 | 15 | 3.2 | 28 |
| | | 131-012 | 132-012 | 133-012 | 134-012 | 135-012 | 8-12 | 5/16 - 15/32 | 2 | 18 | 4 | 35 |
| | | 131-016 | 132-016 | 133-016 | 134-016 | 135-016 | 8-16 | 5/16 - 5/8 | 2 | 18 | 4 | 35 |
| | | 131-018 | | | | | 12-18 | 15/32 - 11/16 | 2 | 18 | 4 | 35 |
| | | 131-020 | 132-020 | 133-020 | 134-020 | 135-020 | 12-20 | 15/32 - 25/32 | 3 | 26 | 4.5 | 40 |
| | | 131-022 | 132-022 | 133-022 | 134-022 | 135-022 | 12-22 | 15/32 - 7/8 | 3 | 26 | 4.5 | 40 |
| | | 131-027 | 132-027 | 133-027 | 134-027 | 135-027 | 16-27 | 5/8 - 1 1/16 | 3 | 26 | 4.5 | 40 |
| | | 131-032 | 132-032 | 133-032 | 134-032 | 135-032 | 20-32 | 25/32 - 1 1/4 | 3 | 26 | 4.5 | 40 |
| | | 131-040 | 132-040 | 133-040 | 134-040 | 135-040 | 25-40 | 1 - 1 9/16 | 3 | 26 | 4.5 | 40 |
| | | 131-045 | 132-045 | 133-045 | 134-045 | 135-045 | 30-45 | 1 3/16 - 1 3/4 | 3 | 26 | 4.5 | 40 |
| | | 131-050 | 132-050 | 133-050 | 134-050 | 135-050 | 32-50 | 1 1/4 - 1 31/32 | 3 | 26 | 4.5 | 40 |
| | | 131-060 | 132-060 | 133-060 | 134-060 | 135-060 | 40-60 | 1 9/16 - 2 3/8 | 3 | 26 | 4.5 | 40 |
| | | 131-070 | 132-070 | 133-070 | 134-070 | 135-070 | 50-70 | 1 31/32 - 2 3/4 | 3 | 26 | 4.5 | 40 |
| | | 131-080 | 132-080 | 133-080 | 134-080 | 135-080 | 60-80 | 2 3/8 - 3 1/8 | 3 | 26 | 4.5 | 40 |
| | | 131-090 | 132-090 | 133-090 | 134-090 | 135-090 | 70-90 | 2 3/4 - 3 17/32 | 3 | 26 | 4.5 | 40 |
| | 9mm | | 131-100 | 132-100 | 133-100 | 134-100 | 135-100 | 80-100 | 3 1/8 - 3 15/16 | 3 | 26 | 4.5 |
| | | 131-110 | 132-110 | 133-110 | 134-110 | 135-110 | 90-110 | 3 1/2 - 4 5/16 | 3 | 26 | 4.5 | 40 |
| | | 131-120 | 132-120 | 133-120 | 134-120 | 135-120 | 100-120 | 3 5/16 - 4 23/32 | 3 | 26 | 4.5 | 40 |
| | | 131-130 | 132-130 | 133-130 | 134-130 | 135-130 | 110-130 | 4 5/16 - 5 1/8 | 3 | 26 | 4.5 | 40 |
| | | 131-140 | 132-140 | 133-140 | 134-140 | 135-140 | 120-140 | 4 23/32 - 5 1/2 | 3 | 26 | 4.5 | 40 |
| | | 131-150 | 132-150 | 133-150 | 134-150 | 135-150 | 130-150 | 5 1/8 - 5 29/32 | 3 | 26 | 4.5 | 40 |
| | | 131-160 | 132-160 | 133-160 | 134-160 | 135-160 | 140-160 | 5 1/2 - 6 5/16 | 3 | 26 | 4.5 | 40 |
| | | 141-027 | 142-027 | 143-027 | 144-027 | 145-027 | 16-27 | 5/8 - 1 1/16 | 5 | 44 | 8 | 71 |
| | | 141-032 | 142-032 | 143-032 | 144-032 | 145-032 | 20-32 | 25/32 - 1 1/4 | 5 | 44 | 8 | 71 |
| | | 141-040 | 142-040 | 143-040 | 144-040 | 145-040 | 25-40 | 1 - 1 9/16 | 5 | 44 | 8.3 | 73 |
| | | 141-045 | 142-045 | 143-045 | 144-045 | 145-045 | 30-45 | 1 3/16 - 1 3/4 | 5 | 44 | 8.3 | 73 |
| | | 141-050 | 142-050 | 143-050 | 144-050 | 145-050 | 32-50 | 1 1/4 - 1 31/32 | 5 | 44 | 8.3 | 73 |
| | | 141-060 | 142-060 | 143-060 | 144-060 | 145-060 | 40-60 | 1 9/16 - 2 3/8 | 5 | 44 | 8.3 | 73 |
| | | 141-070 | 142-070 | 143-070 | 144-070 | 145-070 | 50-70 | 1 31/32 - 2 3/4 | 5 | 44 | 8.3 | 73 |
| | | 141-075 | 142-075 | 143-075 | 144-075 | 145-075 | 55-75 | 2 3/16 - 2 15/16 | 5 | 44 | 8.3 | 73 |
| | | 141-080 | 142-080 | 143-080 | 144-080 | 145-080 | 60-80 | 2 3/8 - 3 1/8 | 5 | 44 | 8.3 | 73 |
| | | 141-090 | 142-090 | 143-090 | 144-090 | 145-090 | 70-90 | 2 3/4 - 3 1/2 | 5 | 44 | 8.3 | 73 |
| | | 141-100 | 142-100 | 143-100 | 144-100 | 145-100 | 80-100 | 3 1/8 - 3 15/16 | 5 | 44 | 8.3 | 73 |
| | 141-110 | 142-110 | 143-110 | 144-110 | 145-110 | 90-110 | 3 1/2 - 4 5/16 | 5 | 44 | 8.3 | 73 | |
| | 141-120 | 142-120 | 143-120 | 144-120 | 145-120 | 100-120 | 3 5/16 - 4 23/32 | 5 | 44 | 8.3 | 73 | |
| | 141-130 | 142-130 | 143-130 | 144-130 | 145-130 | 110-130 | 4 5/16 - 5 1/8 | 5 | 44 | 8.3 | 73 | |
| | 141-140 | 142-140 | 143-140 | 144-140 | 145-140 | 120-140 | 4 23/32 - 5 1/2 | 5 | 44 | 8.3 | 73 | |
| | 141-150 | 142-150 | 143-150 | 144-150 | 145-150 | 130-150 | 5 1/8 - 5 29/32 | 5 | 44 | 8.3 | 73 | |
| | 141-160 | 142-160 | 143-160 | 144-160 | 145-160 | 140-160 | 5 1/2 - 6 5/16 | 5 | 44 | 8.3 | 73 | |
| | 141-170 | 142-170 | 143-170 | | | 150-170 | 5 29/32 - 6 11/16 | | | | | |
| | 141-180 | 142-180 | 143-180 | | | 160-180 | 6 5/16 - 7 3/32 | | | | | |
| | 141-190 | | | | | 170-190 | 6 11/16 - 7 15/32 | | | | | |
| | 141-200 | 142-200 | 143-200 | | | 180-200 | 7 3/32 - 7 7/8 | | | | | |
| | 141-210 | | | | | 190-210 | 7 15/32 - 8 1/4 | | | | | |

Additional sizes available upon request



300 Series

TRIDON® Micro-Gear® 300 Series

Screw: 6.35mm (1/4") hex combo, plated steel
 Band: 7.94mm (5/16") band width, stainless steel
 Housing: Low profile, plated steel
 Corrosion Resistance: Low requirements



325 Series

TRIDON® Micro-Gear® 325 Series

Screw: 6.35mm (1/4") hex combo, plated steel
 Band: 7.94mm (5/16") band width, 201/301 stainless steel
 Housing: Low profile, 201/301 stainless steel
 Corrosion Resistance: Average requirements



350 Series

TRIDON® Micro-Gear® 350 Series

Screw: 6.35mm (1/4") hex slotted, 410 stainless steel
 Band: 7.94mm (5/16") band width, 201/301 stainless steel
 Housing: Low profile, 201/301 stainless steel
 Corrosion Resistance: Above average requirements



345 Series

TRIDON® Micro-Gear® 345 Series

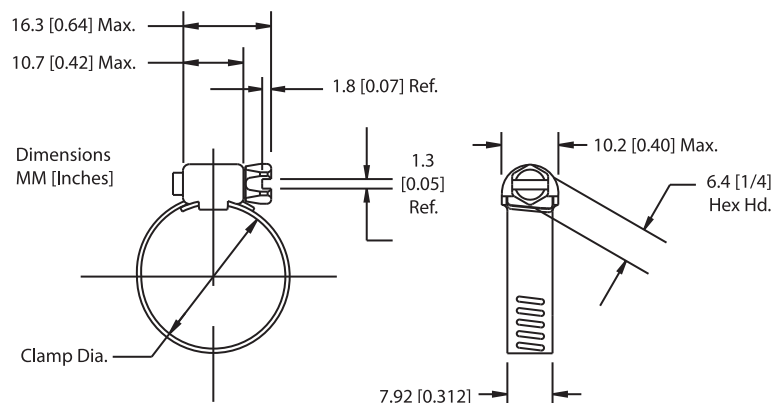
Screw: 6.35mm (1/4") hex slotted, 300 stainless steel
 Band: 7.94mm (5/16") band width, 300 stainless steel
 Housing: Low profile, 300 stainless steel
 Corrosion Resistance: High requirements
 Low magnetic permeability



359 Series

TRIDON® Micro-Gear® 359 Series

Screw: 6.35mm (1/4") hex slotted, 316 stainless steel
 Band: 7.94mm (5/16") band width, 316 stainless steel
 Housing: Low profile, 316 stainless steel
 Corrosion Resistance: High requirements. Salt water resistant.
 Low magnetic permeability.



Micro-Gear® clamps are tiny, tough and precision engineered for use in small hose applications such as emission control, fuel lines and vacuum hoses. Their slim band and low profile housing make them easy to install in confined areas.

TRIDON® Micro-Gear® Clamps – Sizing / Clamping Range Chart

| SAE Sizes | Part No. 300 | Part No. 325 | Part No. 350 | Part No. 345 | Part No. 359 | Min. Dia. (mm) | Max. Dia. (mm) | Min. Dia. (in.) | Max. Dia. (in.) | Installation (Nm) | Installation (in-lbs) | Ultimate (Min. Nm) | Ultimate (Min. in-lbs) |
|-----------|--------------|--------------|--------------|--------------|--------------|----------------|----------------|-----------------|-----------------|-------------------|-----------------------|--------------------|------------------------|
| 04 | 300-004 | 325-004 | 350-004 | 345-004 | 359-004 | 6 | 16 | 1/4 | 5/8 | 1.1 - 1.7 | 10-15 | 2.3 | 20 |
| 05 | 300-005 | 325-005 | 350-005 | 345-005 | — | 7 | 17 | 1/4 | 11/16 | 1.1 - 1.7 | 10-15 | 2.3 | 20 |
| 06 | 300-006 | 325-006 | 350-006 | 345-006 | 359-006 | 8 | 22 | 5/16 | 7/8 | 1.1 - 1.7 | 10-15t | 2.3 | 20 |
| 08 | 300-008 | 325-008 | 350-008 | 345-008 | — | 10 | 25 | 3/8 | 1 | 1.1 - 1.7 | 10-15 | 2.3 | 20 |
| 10 | 300-010 | 325-010 | 350-010 | 345-010 | — | 10 | 27 | 3/8 | 1 1/16 | 1.1 - 1.7 | 10-15 | 2.3 | 20 |
| 12 | 300-012 | 325-012 | 350-012 | 345-012 | — | 13 | 32 | 1/2 | 1 1/4 | 1.1 - 1.7 | 10-15 | 2.3 | 20 |
| 16 | 300-016 | 325-016 | 350-016 | 345-016 | — | 13 | 38 | 1/2 | 1 1/2 | 1.1 - 1.7 | 10-15 | 2.3 | 20 |
| 20 | 300-020 | 325-020 | 350-020 | 345-020 | — | 19 | 44 | 3/4 | 1 3/4 | 1.1 - 1.7 | 10-15 | 2.3 | 20 |
| 24 | 300-024 | 325-024 | 350-024 | 345-024 | — | 26 | 51 | 1 | 2 | 1.1 - 1.7 | 10-15 | 2.3 | 20 |
| 28 | 300-028 | 325-028 | 350-028 | 345-028 | — | 32 | 57 | 1 1/4 | 2 1/4 | 1.1 - 1.7 | 10-15 | 2.3 | 20 |
| 30 | 300-030 | 325-030 | 350-030 | 345-030 | — | 35 | 60 | 1 3/8 | 2 3/8 | 1.1 - 1.7 | 10-15 | 2.3 | 20 |
| 32 | 300-032 | 325-032 | 350-032 | 345-032 | — | 38 | 63 | 1 1/2 | 2 1/2 | 1.1 - 1.7 | 10-15 | 2.3 | 20 |
| 36 | 300-036 | 325-036 | 350-036 | 345-036 | — | 45 | 70 | 1 3/4 | 2 3/4 | 1.1 - 1.7 | 10-15 | 2.3 | 20 |
| 44 | 300-044 | 325-044 | 350-044 | 345-044 | — | 57 | 82 | 2 1/4 | 3 1/4 | 1.1 - 1.7 | 10-15 | 2.3 | 20 |
| 48 | 300-048 | 325-048 | 350-048 | 345-048 | — | 64 | 89 | 2 1/2 | 3 1/2 | 1.1 - 1.7 | 10-15 | 2.3 | 20 |

Additional sizes available upon request

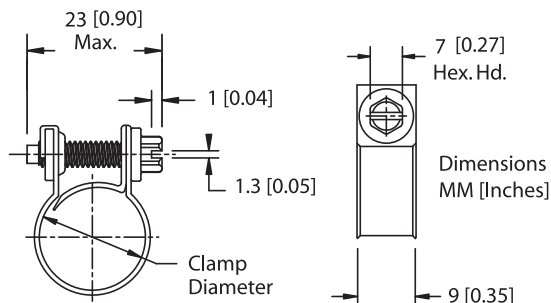
FUEL INJECTION

Fuel injection clamps are designed to provide the uniform sealing pressure required on fuel injection hoses. They feature a solid band with rolled edges and a special nut and bolt design.

TRIDON® Automotive F.I. 905 Series

Screw: 7mm hex slotted, clear zinc-plated steel

Band: 9mm band width, clear zinc-plated steel



905 Series

| SAE Sizes | Part No | Min. Dia. (mm) | Max. Dia. (mm) | Min. Dia. (in.) | Max. Dia. (in.) | Installation (Nm) | Installation (in-lbs) | Ultimate (Min. Nm) | Ultimate (Min. in-lbs) |
|-----------|---------|----------------|----------------|-----------------|-----------------|-------------------|-----------------------|--------------------|------------------------|
| 4 | 905-004 | 11 | 13 | 7/16 | 1/2 | 2.8 | 25 | 4.5 | 40 |
| 6 | 905-006 | 13 | 15 | 1/2 | 9/16 | 2.8 | 25 | 4.5 | 40 |
| 8 | 905-008 | 14 | 16 | 9/16 | 5/8 | 2.8 | 25 | 4.5 | 40 |

Additional sizes available upon request



600 Series



611 Series



620 Series



620P Series



665 Series

Tridon® standard 1/2" band clamps are suitable for most common home and automotive repairs. The bands have clean punched rectangular perforations that hold strong and connect easily.

TRIDON® 600 Series

Screw: 7.94mm (5/16") hex slotted, plated steel
 Band: 12.70mm (1/2") band width, stainless steel
 Housing: Plated steel
 Corrosion Resistance: Low requirements

TRIDON® 611 Series

Screw: 7.94mm (5/16") hex slotted, plated steel
 Band: 12.70mm (1/2") band width, 201/301 stainless steel
 Housing: 201/301 stainless steel
 Corrosion Resistance: Average requirements

TRIDON® 620 Series

Screw: 7.94mm (5/16") hex slotted, 305 stainless steel
 Band: 12.70mm (1/2") band width, 201/301 stainless steel
 Housing: 201/301 stainless steel, with UPC shield
 Corrosion Resistance: Above average to High requirements

TRIDON® 620P Series

Screw: 7.94mm (5/16") hex slotted, 305 stainless steel
 Band: 12.70mm (1/2") band width, 300 stainless steel
 Housing: 300 stainless steel, with UPC shield
 Corrosion Resistance: High requirements
 Low magnetic permeability

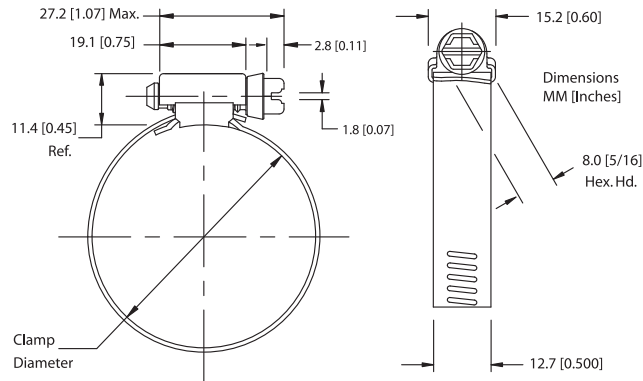
TRIDON® 665 Series

Screw: 7.94mm (5/16") hex slotted, 316 stainless steel
 Band: 12.70mm (1/2") band width, 316 stainless steel
 Housing: 316 stainless steel
 Corrosion Resistance: High requirements. Salt water resistant.
 Low magnetic permeability

TRIDON® Perforated Band Clamps (American Style) – Sizing / Clamping Range Chart

| SAE Sizes | Part No. 300 | Part No. 325 | Part No. 350 | Part No. 345 | Part No. 359 | Min. Dia. (mm) | Max. Dia. (mm) | Min. Dia. (in.) | Max. Dia. (in.) | Installation (Nm) | Installation (in-lbs) | Ultimate (Min. Nm) | Ultimate (Min. in-lbs) |
|-----------|--------------|--------------|--------------|--------------|--------------|----------------|----------------|-----------------|-----------------|-------------------|-----------------------|--------------------|------------------------|
| 6 | 600-006 | 611-006 | 620-006 | 620-006P | 665-006 | 10 | 22 | 3/8 | 7/8 | 3.4 - 4 | 30 - 35 | 6.8 | 60 |
| 8 | 600-008 | 611-008 | 620-008 | 620-008P | 665-008 | 11 | 25 | 7/16 | 1 | 3.4 - 4 | 30 - 35 | 6.8 | 60 |
| 10 | 600-010 | 611-010 | 620-010 | 620-010P | 665-010 | 13 | 27 | 1/2 | 1 1/16 | 3.4 - 4 | 30 - 35 | 6.8 | 60 |
| 12 | 600-012 | 611-012 | 620-012 | 620-012P | 665-012 | 13 | 32 | 1/2 | 1 1/4 | 3.4 - 4 | 30 - 35 | 6.8 | 60 |
| 16 | 600-016 | 611-016 | 620-016 | 620-016P | 665-016 | 18 | 38 | 11/16 | 1 1/2 | 3.4 - 4 | 30 - 35 | 6.8 | 60 |
| 20 | 600-020 | 611-020 | 620-020 | 620-020P | 665-020 | 19 | 44 | 3/4 | 1 3/4 | 3.4 - 4 | 30 - 35 | 6.8 | 60 |
| 24 | 600-024 | 611-024 | 620-024 | 620-024P | 665-024 | 25 | 51 | 1 | 2 | 3.4 - 4 | 30 - 35 | 6.8 | 60 |
| 28 | 600-028 | 611-028 | 620-028 | 620-028P | 665-028 | 32 | 57 | 1 1/4 | 2 1/4 | 3.4 - 4 | 30 - 35 | 6.8 | 60 |
| 32 | 600-032 | 611-032 | 620-032 | 620-032P | 665-032 | 38 | 63 | 1 1/2 | 2 1/2 | 3.4 - 4 | 30 - 35 | 6.8 | 60 |
| 36 | 600-036 | 611-036 | 620-036 | 620-036P | 665-036 | 44 | 70 | 1 3/4 | 2 3/4 | 3.4 - 4 | 30 - 35 | 6.8 | 60 |
| 40 | 600-040 | 611-040 | 620-040 | 620-040P | 665-040 | 51 | 76 | 2 | 3 | 3.4 - 4 | 30 - 35 | 6.8 | 60 |
| 44 | 600-044 | 611-044 | 620-044 | 620-044P | 665-044 | 57 | 82 | 2 1/4 | 3 1/4 | 3.4 - 4 | 30 - 35 | 6.8 | 60 |
| 48 | 600-048 | 611-048 | 620-048 | 620-048P | 665-048 | 64 | 114 | 2 1/2 | 3 1/2 | 3.4 - 4 | 30 - 35 | 6.8 | 60 |
| 52 | 600-052 | 611-052 | 620-052 | 620-052P | 665-052 | 70 | 95 | 2 3/4 | 3 3/4 | 3.4 - 4 | 30 - 35 | 6.8 | 60 |
| 56 | 600-056 | 611-056 | 620-056 | 620-056P | 665-056 | 76 | 101 | 3 | 4 | 3.4 - 4 | 30 - 35 | 6.8 | 60 |
| 60 | 600-060 | 611-060 | 620-060 | 620-060P | 665-060 | 83 | 108 | 3 1/4 | 4 1/4 | 3.4 - 4 | 30 - 35 | 6.8 | 60 |
| 64 | 600-064 | 611-064 | 620-064 | 620-064P | 665-064 | 64 | 114 | 2 1/2 | 4 1/2 | 3.4 - 4 | 30 - 35 | 6.8 | 60 |
| 72 | 600-072 | 611-072 | 620-072 | 620-072P | 665-072 | 76 | 127 | 3 | 5 | 3.4 - 4 | 30 - 35 | 6.8 | 60 |
| 80 | 600-080 | 611-080 | 620-080 | 620-080P | 665-080 | 89 | 140 | 3 1/2 | 5 1/2 | 3.4 - 4 | 30 - 35 | 6.8 | 60 |
| 88 | 600-088 | 611-088 | 620-088 | 620-088P | 665-088 | 102 | 152 | 4 | 6 | 3.4 - 4 | 30 - 35 | 6.8 | 60 |
| 96 | 600-096 | 611-096 | 620-096 | 620-096P | 665-096 | 114 | 165 | 4 1/2 | 6 1/2 | 3.4 - 4 | 30 - 35 | 6.8 | 60 |
| 104 | 600-104 | 611-104 | 620-104 | 620-104P | 665-104 | 127 | 178 | 5 | 7 | 3.4 - 4 | 30 - 35 | 6.8 | 60 |

Additional sizes available upon request





580 Series

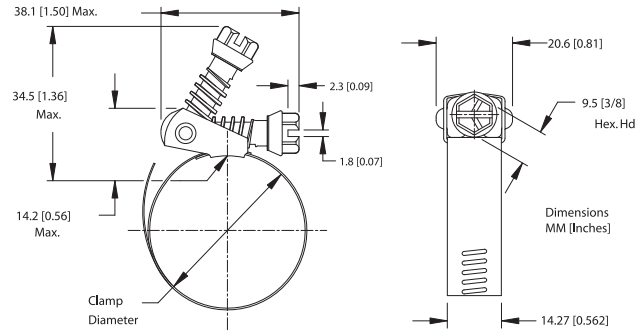


581 Series

Tridon® quick-release Snaplock® clamps are good for closed system applications where the clamp must be disengaged to be applied. The swivel-action locking of screw to band makes installation and removal fast and easy.

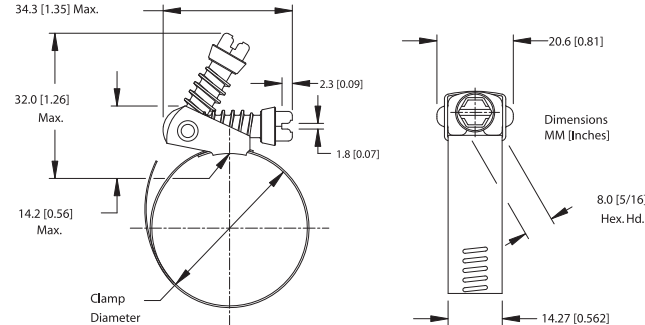
TRIDON® Snaplock® 580 Series

Screw: 7.94mm (5/16") hex slotted, plated steel
 Band: 14.29mm (9/16") band width, 201/301 stainless steel
 Housing: 201/301 stainless steel



TRIDON® Snaplock® 581 Series

Screw: 9.52mm (3/8") hex-head, combo slotted, 410 stainless steel
 Band: 14.29mm (9/16") band width, 201/301 stainless steel
 Housing: 201/301 stainless steel



TRIDON® Quick Release Snaplock® Clamps – Sizing / Clamping Range Chart

| SAE Sizes | Part No. 580 | Part No. 581 | Min. Dia. (mm) | Max. Dia. (mm) | Min. Dia. (in.) | Max. Dia. (in.) | Installation (Nm) | Installation (in-lbs) | Ultimate (Min. Nm) | Ultimate (in-lbs) |
|-----------|--------------|--------------|----------------|----------------|-----------------|-----------------|-------------------|-----------------------|--------------------|-------------------|
| 12 | 580-012 | 581-012 | 13 | 32 | 1/2 | 1 1/4 | 3.4 - 4 | 30 - 35 | 6.8 | 60 |
| 20 | 580-020 | 581-020 | 19 | 44 | 3/4 | 1 3/4 | 3.4 - 4 | 30 - 35 | 6.8 | 60 |
| 24 | 580-024 | 581-024 | 26 | 51 | 1 | 2 | 3.4 - 4 | 30 - 35 | 6.8 | 60 |
| 28 | 580-028 | 581-028 | 26 | 57 | 1 | 2 1/4 | 3.4 - 4 | 30 - 35 | 6.8 | 60 |
| 36 | 580-036 | 581-036 | 26 | 70 | 1 | 2 3/4 | 3.4 - 4 | 30 - 35 | 6.8 | 60 |
| 48 | 580-048 | 581-048 | 38 | 89 | 1 1/2 | 3 1/2 | 3.4 - 4 | 30 - 35 | 6.8 | 60 |
| 56 | 580-056 | 581-056 | 26 | 101 | 1 | 4 | 3.4 - 4 | 30 - 35 | 6.8 | 60 |
| 72 | 580-072 | 581-072 | 51 | 127 | 2 | 5 | 3.4 - 4 | 30 - 35 | 6.8 | 60 |
| 88 | 580-088 | 581-088 | 51 | 152 | 2 | 6 | 3.4 - 4 | 30 - 35 | 6.8 | 60 |
| 104 | 580-104 | 581-104 | 45 | 178 | 1 3/4 | 7 | 3.4 - 4 | 30 - 35 | 6.8 | 60 |
| 116 | 580-116 | 581-116 | 45 | 197 | 1 3/4 | 7 3/4 | 3.4 - 4 | 30 - 35 | 6.8 | 60 |
| 128 | 580-128 | 581-128 | 45 | 216 | 2 1/4 | 8 1/2 | 3.4 - 4 | 30 - 35 | 6.8 | 60 |
| 136 | 580-136 | 581-136 | 45 | 228 | 1 3/4 | 9 | 3.4 - 4 | 30 - 35 | 6.8 | 60 |
| 152 | 580-152 | 581-152 | 51 | 254 | 2 | 10 | 3.4 - 4 | 30 - 35 | 6.8 | 60 |
| 188 | 580-188 | 581-188 | 51 | 311 | 2 | 12 1/4 | 3.4 - 4 | 30 - 35 | 6.8 | 60 |

Clamps are shipped disengaged. Information on special sizes available on request.

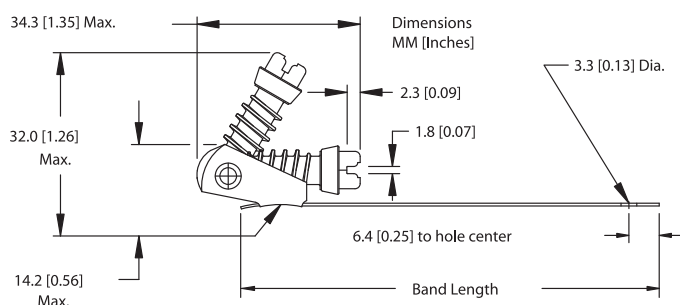
SNAPLOCK® 2-PART CLAMPS

This unique two part clamp is adaptable to a variety of latching or locking applications where repeated opening and closing is necessary. Holes in the end of each part allow for permanent installation of clamp with rivets or screws.

Part 1 - TRIDON® 582

Screw: 7.94mm (5/16") hex slotted, plated steel

Housing: Stainless steel.



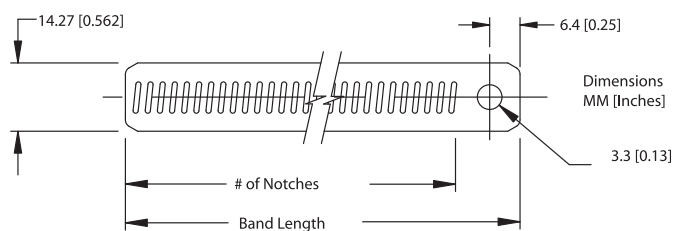
582

TRIDON® Two-Piece Snaplock® Clamps – Housing & Screw

| Part No. | Band Length | | Hole Diameter | |
|----------|-------------|--------|---------------|--------|
| | mm | inches | mm | inches |
| 582-002 | 47.2 | 1.86 | 3.3 | 0.13 |
| 582-003 | 38.1 | 1.50 | 3.3 | 0.13 |
| 582-004 | 94.5 | 3.72 | 3.3 | 0.13 |
| 582-005 | 92.1 | 3.63 | 6.4 | 0.25 |

Part 2 - TRIDON® 583

Band: 14.29mm (9/16") band width, 201/301 stainless steel



583

TRIDON® Two-Piece Snaplock® Clamps – Band

| Part No. | Band Length | | Hole Diameter | |
|----------|-------------|--------|---------------|--------|
| | mm | inches | mm | inches |
| 583-002 | 122.2 | 4.81 | 3.3 | 0.13 |
| 583-003 | 98.4 | 3.88 | 3.3 | 0.13 |
| 583-004 | 165.1 | 6.50 | 3.3 | 0.13 |
| 583-005 | 120.7 | 4.75 | 3.3 | 0.13 |
| 583-006 | 255.6 | 10.06 | 3.3 | 0.13 |
| 583-007 | 50.8 | 2.00 | 3.3 | 0.13 |
| 583-008 | 152.4 | 6.00 | 6.4 | 0.25 |



548 Series



549 Series

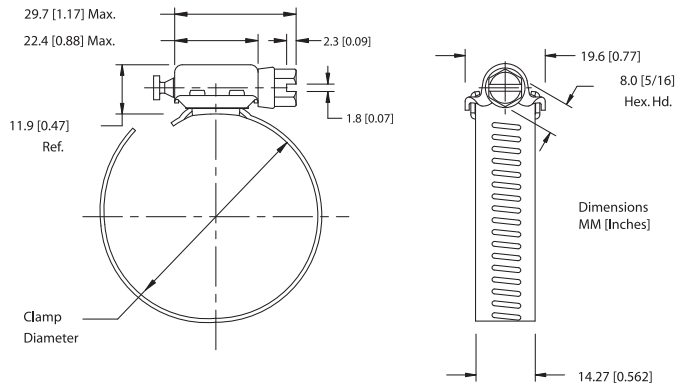
Surelock's unbound pull-through design makes installation easy, with added captured screw design for trouble-free connection and tensioning. Extended housing embraces 25% more screw threads than competitive designs.

TRIDON® Surelock 548 Series

Screw: 7.94mm (5/16") hex slotted, 300 stainless steel
 Band: 14.29mm (9/16") band width, 300 stainless steel
 Housing: 300 stainless steel

TRIDON® Surelock 549 Series

Screw: 7.94mm (5/16") hex slotted, 316 stainless steel.
 Band: 14.29mm (9/16") band width, 316 stainless steel.
 Housing: 316 stainless steel



TRIDON® Surelock Clamps – Sizing / Clamping Range Chart

| SAE Sizes | Part No. 548 | Part No. 549 | Min. Dia. (mm) | Max. Dia. (mm) | Min. Dia. (in.) | Max. Dia. (in.) | Installation (Nm) | Installation (in-lbs) | Ultimate (Min. Nm) | Ultimate (in-lbs) |
|-----------|--------------|--------------|----------------|----------------|-----------------|-----------------|-------------------|-----------------------|--------------------|-------------------|
| 12 | 548-012 | 549-012 | 13 | 32 | 1/2 | 1 1/4 | 5.1 | 45 | 8.5 | 75 |
| 20 | 548-020 | 549-020 | 19 | 44 | 3/4 | 1 3/4 | 5.1 | 45 | 8.5 | 75 |
| 24 | 548-024 | 549-024 | 19 | 51 | 3/4 | 2 | 5.1 | 45 | 8.5 | 75 |
| 28 | 548-028 | 549-028 | 26 | 57 | 1 | 2 1/4 | 5.1 | 45 | 8.5 | 75 |
| 32 | 548-032 | 549-032 | 26 | 63 | 1 | 2 1/2 | 5.1 | 45 | 8.5 | 75 |
| 36 | 548-036 | 549-036 | 22 | 70 | 7/8 | 2 3/4 | 5.1 | 45 | 8.5 | 75 |
| 48 | 548-048 | 549-048 | 26 | 89 | 1 | 3 1/2 | 5.1 | 45 | 8.5 | 75 |
| 56 | 548-056 | 549-056 | 26 | 101 | 1 | 4 | 5.1 | 45 | 8.5 | 75 |
| 72 | 548-072 | 549-072 | 51 | 127 | 2 | 5 | 5.1 | 45 | 8.5 | 75 |
| 80 | 548-080 | 549-080 | 65 | 140 | 2 9/16 | 5 1/2 | 5.1 | 45 | 8.5 | 75 |
| 88 | 548-088 | 549-088 | 51 | 152 | 2 | 6 | 5.1 | 45 | 8.5 | 75 |
| 104 | 548-104 | 549-104 | 51 | 178 | 2 | 7 | 5.1 | 45 | 8.5 | 75 |
| 116 | 548-116 | 549-116 | 44 | 197 | 1 3/4 | 7 3/4 | 5.1 | 45 | 8.5 | 75 |
| 128 | 548-128 | 549-128 | 108 | 216 | 4 1/4 | 8 1/2 | 5.1 | 45 | 8.5 | 75 |
| 152 | 548-152 | 549-152 | 102 | 254 | 4 | 10 | 5.1 | 45 | 8.5 | 75 |
| 180 | 548-180 | 549-180 | 197 | 298 | 7 3/4 | 11 3/4 | 5.1 | 45 | 8.5 | 75 |
| 188 | 548-188 | 549-188 | 159 | 311 | 6 1/4 | 12 1/4 | 5.1 | 45 | 8.5 | 75 |

Additional sizes available upon request

Innovative design installs with a simple hand twist, no tools required. Easy to remove and replace. Pull off the screw cap for a tamper-resistant connection. Available in yellow, blue and red. Common applications: automotive heater and radiator hoses, garden hoses, R.V. sewer hoses, dryer vent hoses and more.

TRIDON® Turn-Key® Clamps

Injection molded thermoplastic screw cap, removable and reusable

Screw: Plated steel

Band: 12.70mm (1/2") band width, stainless steel

Housing: Stainless steel

Installation Torque: 3.4 - 4.0 Nm; 30-35 in.-lbs.

Ultimate Torque: 6.8 Min. Nm; 60 in.-lbs.

Automotive Hose Clamps:

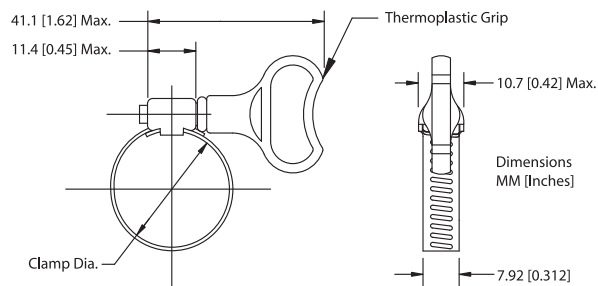
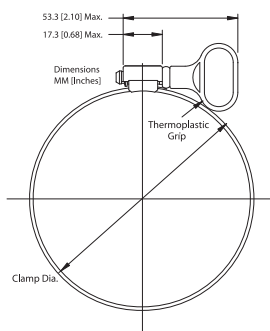
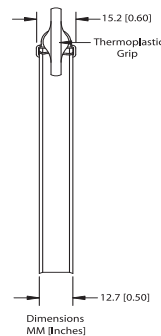
Heater = SAE sizes No. 12 or 20

Radiator = SAE sizes No. 28 or 36

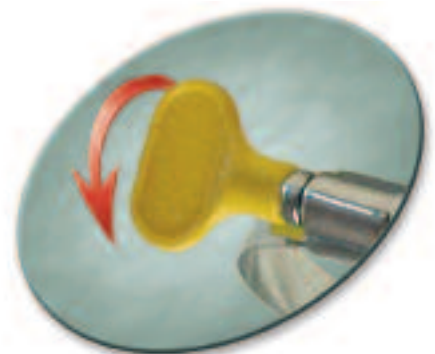
Garden Hose Clamps: SAE size No. 12

R.V. Sewer Hose Clamps: SAE size No. 48

Dryer Vent Hose Clamps: SAE size No. 64



Miniature Turn-Key clamp dimensions shown in drawing.



TRIDON® Turn-Key® Clamps – Sizing / Clamping Range Chart

| Part No. | SAE Sizes | Color | Min. Dia. (mm) | Max. Dia. (mm) | Min. Dia. (in.) | Max. Dia. (in.) |
|----------|-------------|--------|----------------|----------------|-----------------|-----------------|
| 807-Y04 | Mini size 4 | Yellow | 6 | 16 | 1/4 | 5/8 |
| 807-R04 | Mini size 4 | Red | 6 | 16 | 1/4 | 5/8 |
| 807-B04 | Mini size 4 | Blue | 6 | 16 | 1/4 | 5/8 |
| 807-Y06 | Mini size 6 | Yellow | 10 | 22 | 3/8 | 7/8 |
| 807-R06 | Mini size 6 | Red | 10 | 22 | 3/8 | 7/8 |
| 807-B06 | Mini size 6 | Blue | 10 | 22 | 3/8 | 7/8 |
| 807-Y12 | 12 | Yellow | 13 | 32 | 1/2 | 1 1/4 |
| 807-R12 | 12 | Red | 13 | 32 | 1/2 | 1 1/4 |
| 807-B12 | 12 | Blue | 13 | 32 | 1/2 | 1 1/4 |
| 807-Y20 | 20 | Yellow | 19 | 44 | 3/4 | 1 3/4 |
| 807-R20 | 20 | Red | 19 | 44 | 3/4 | 1 3/4 |
| 807-B20 | 20 | Blue | 19 | 44 | 3/4 | 1 3/4 |
| 807-Y28 | 28 | Yellow | 32 | 57 | 1 1/4 | 2 1/4 |
| 807-R28 | 28 | Red | 32 | 57 | 1 1/4 | 2 1/4 |
| 807-B28 | 28 | Blue | 32 | 57 | 1 1/4 | 2 1/4 |
| 807-Y36 | 36 | Yellow | 44 | 70 | 1 3/4 | 2 3/4 |
| 807-R36 | 36 | Red | 44 | 70 | 1 3/4 | 2 3/4 |
| 807-B36 | 36 | Blue | 44 | 70 | 1 3/4 | 2 3/4 |
| 807-Y48 | 48 | Yellow | 64 | 114 | 2 1/2 | 3 1/2 |
| 807-R48 | 48 | Red | 64 | 114 | 2 1/2 | 3 1/2 |
| 807-B48 | 48 | Blue | 64 | 114 | 2 1/2 | 3 1/2 |
| 807-Y64 | 64 | Yellow | 64 | 114 | 2 1/2 | 4 1/2 |
| 807-R64 | 64 | Red | 64 | 114 | 2 1/2 | 4 1/2 |
| 807-B64 | 64 | Blue | 64 | 114 | 2 1/2 | 4 1/2 |



86P Series

Premium Pow'r-Gear® clamps are designed for high vibration and stubborn leakage applications such as industrial machinery, heavy truck, farm and off-road equipment engines. Features an extra wide 15.87mm (5/8") band and a wide profile housing that provides maximum engagement of screw threads to band. Engineered to deliver exceptionally high rates of band tension to handle the toughest sealing jobs.

TRIDON® Pow'r-Gear® Clamps 86P Series

Screw: 7.94mm (5/16") hex-head, 305 stainless steel
 Band: 15.87mm (5/8") band width. 0.711mm (0.028") thick, 300 stainless steel
 Housing: 1.542mm (0.060") thick, 300 stainless steel
 Corrosion Resistance: High requirements

TRIDON® Pow'r-Gear® Clamps 86M Series

For maximum protection of soft hoses. Protective liner prevents extrusion and shearing of hose through band notches. Extended band design prevents liner from skewing during installation.

Screw: 7.94mm (5/16") hex-head, 305 stainless steel
 Band & Liner: 15.87mm (5/8") band width, 0.711mm (0.028") thick, 300 stainless steel
 Housing: 1.542mm (0.060") thick, 300 stainless steel.
 Corrosion Resistance: High requirements

TRIDON® Pow'r-Gear® Clamps 86X Series

Extra band notches allow greater opened and closed working diameters. Only five sizes cover clamping diameters from 31.75mm to 257.175mm (1 1/4" to 10 1/8"). Minimizes inventory investment without compromising application coverage.

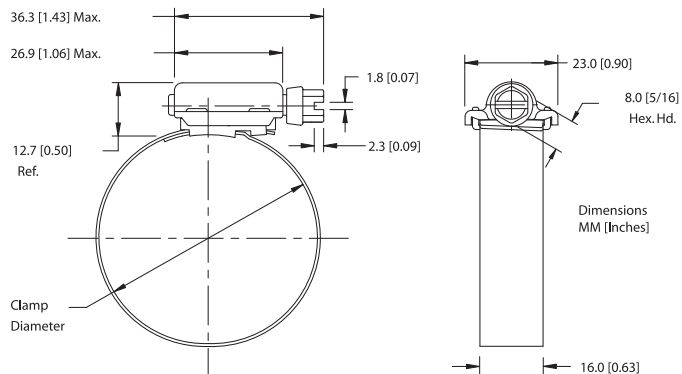
Screw: 7.94mm (5/16") hex-head, 410 stainless steel
 Band: 15.87mm (5/8") design, 0.711mm (0.028") thick, 300 stainless steel.
 Housing: 1.542mm (0.060") thick, 300 stainless steel
 Corrosion Resistance: Above average requirements

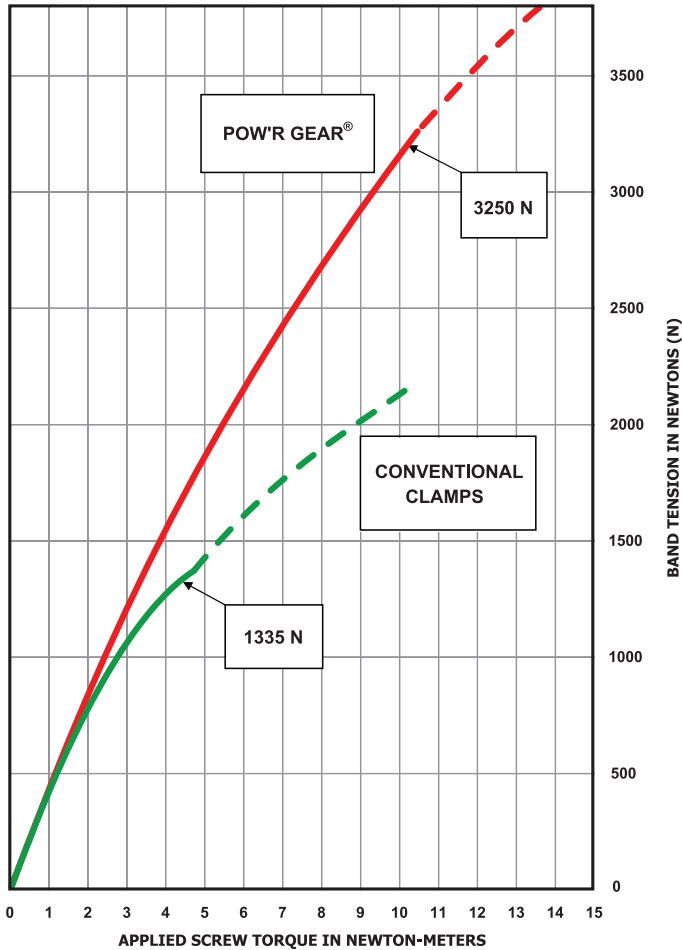


86M Series



86X Series





POW'R-GEAR® clamps deliver over 1900 Newtons of band tension at 10 Nm of screw torque. That's more than twice the band tension of conventional clamps.

TRIDON® Pow'r-Gear® Clamps – Sizing / Clamping Range Chart

| SAE Sizes | Part No. 86P | Part No. 86M | Min. Dia. (mm) | Max. Dia. (mm) | Min. Dia. (in.) | Max. Dia. (in.) | Installation (Nm) | Installation (in-lbs) | Ultimate (Min. Nm) | Ultimate (in-lbs) |
|-----------|--------------|--------------|----------------|----------------|-----------------|-----------------|-------------------|-----------------------|--------------------|-------------------|
| 175 | 86P-175 | 86M-175 | 25 | 45 | 1 | 1 3/4 | 8.5 - 10.2 | 75 - 90 | 16.9 | 150 |
| 212 | 86P-200 | 86M-200 | 32 | 54 | 1 1/4 | 2 1/8 | 8.5 - 10.2 | 75 - 90 | 16.9 | 150 |
| 262 | 86P-250 | 86M-250 | 45 | 66 | 1 3/4 | 2 5/8 | 8.5 - 10.2 | 75 - 90 | 16.9 | 150 |
| 312 | 86P-300 | 86M-300 | 57 | 79 | 2 1/4 | 3 1/8 | 8.5 - 10.2 | 75 - 90 | 16.9 | 150 |
| 362 | 86P-350 | 86M-350 | 70 | 92 | 2 3/4 | 3 5/8 | 8.5 - 10.2 | 75 - 90 | 16.9 | 150 |
| 412 | 86P-400 | 86M-400 | 83 | 105 | 3 1/4 | 4 1/8 | 8.5 - 10.2 | 75 - 90 | 16.9 | 150 |
| 462 | 86P-450 | 86M-450 | 95 | 117 | 3 3/4 | 4 5/8 | 8.5 - 10.2 | 75 - 90 | 16.9 | 150 |
| 512 | 86P-500 | 86M-500 | 108 | 130 | 4 1/4 | 5 1/8 | 8.5 - 10.2 | 75 - 90 | 16.9 | 150 |
| 562 | 86P-550 | 86M-550 | 121 | 143 | 4 3/4 | 5 5/8 | 8.5 - 10.2 | 75 - 90 | 16.9 | 150 |
| 612 | 86P-600 | 86M-600 | 133 | 155 | 5 1/4 | 6 1/8 | 8.5 - 10.2 | 75 - 90 | 16.9 | 150 |
| 662 | 86P-650 | 86M-650 | 146 | 168 | 5 3/4 | 6 5/8 | 8.5 - 10.2 | 75 - 90 | 16.9 | 150 |
| 712 | 86P-700 | 86M-700 | 159 | 181 | 6 1/4 | 7 1/8 | 8.5 - 10.2 | 75 - 90 | 16.9 | 150 |
| 762 | 86P-750 | 86M-750 | 172 | 193 | 6 3/4 | 7 5/8 | 8.5 - 10.2 | 75 - 90 | 16.9 | 150 |
| 812 | 86P-800 | 86M-800 | 184 | 206 | 7 1/4 | 8 1/8 | 8.5 - 10.2 | 75 - 90 | 16.9 | 150 |
| 862 | 86P-850 | 86M-850 | 197 | 219 | 7 3/4 | 8 5/8 | 8.5 - 10.2 | 75 - 90 | 16.9 | 150 |
| 912 | 86P-900 | 86M-900 | 210 | 232 | 8 1/4 | 9 1/8 | 8.5 - 10.2 | 75 - 90 | 16.9 | 150 |

| SAE Sizes | Part No. | Min. Dia. (mm) | Max. Dia. (mm) | Min. Dia. (in.) | Max. Dia. (in.) | Installation (Nm) | Installation (in-lbs) | Ultimate (Min. Nm) | Ultimate (Min. in-lbs) |
|-----------|----------|----------------|----------------|-----------------|-----------------|-------------------|-----------------------|--------------------|------------------------|
| 262 | 86X-200 | 32 | 66 | 1 1/4 | 2 5/8 | 8.5 - 10.2 | 75 - 90 | 16.9 | 150 |
| 412 | 86X-300 | 51 | 104 | 2 | 4 1/8 | 8.5 - 10.2 | 75 - 90 | 16.9 | 150 |
| 612 | 86X-400 | 102 | 155 | 4 | 6 1/8 | 8.5 - 10.2 | 75 - 90 | 16.9 | 150 |
| 912 | 86X-500 | 153 | 231 | 6 | 9 1/8 | 8.5 - 10.2 | 75 - 90 | 16.9 | 150 |
| 1012 | 86X-600 | 178 | 257 | 7 | 10 1/8 | 8.5 - 10.2 | 75 - 90 | 16.9 | 150 |

845 Series



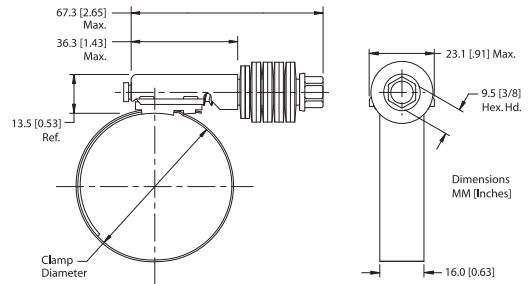
847 Series



Using a Belleville spring design to eliminate "cold flow" leakage, Flex-Gear® and Flex-Gear® clamps adjust with the hose and fitting to maintain constant tension on the connection, eliminating leak paths. Excellent choice for fluctuating and extreme temperature applications and thermal compensation.

TRIDON® Flex-Gear HD® Clamps 845 Series
Larger, heavier gauge and precision formed Belleville springs

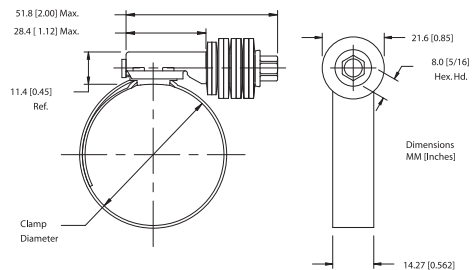
- Screw: 9.52mm (3/8") hex-head, 410 stainless steel
- Band: 15.87mm (5/8") band width, 300 stainless steel
- Liner: 300 stainless steel
- Housing: 300 stainless steel
- Springs: 300 stainless steel
- Installation Torque: 8.5 Nm; 75 in.-lbs.
- Ultimate Torque: 14.1 Min. Nm; 125 in.-lbs.



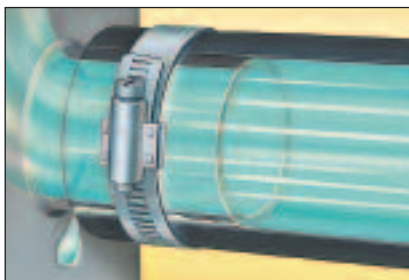
| SAE Sizes | Part No. | Min. Dia. (mm) | Max. Dia. (mm) | Min. Dia. (in.) | Max. Dia. (in.) |
|-----------|----------|----------------|----------------|-----------------|-----------------|
| 175 | 845-175 | 25 | 45 | 1 | 1 3/4 |
| 212 | 845-200 | 32 | 54 | 1 1/4 | 2 1/8 |
| 262 | 845-250 | 45 | 67 | 1 3/4 | 2 5/8 |
| 312 | 845-300 | 57 | 79 | 2 1/4 | 3 1/8 |
| 362 | 845-350 | 70 | 92 | 2 3/4 | 3 5/8 |
| 412 | 845-400 | 83 | 105 | 3 1/4 | 4 1/8 |
| 462 | 845-450 | 95 | 117 | 3 3/4 | 4 5/8 |
| 512 | 845-500 | 108 | 130 | 4 1/4 | 5 1/8 |
| 562 | 845-550 | 121 | 143 | 4 3/4 | 5 5/8 |
| 612 | 845-600 | 133 | 155 | 5 1/4 | 6 1/8 |
| 662 | 845-650 | 146 | 168 | 5 3/4 | 6 5/8 |
| 712 | 845-700 | 159 | 181 | 6 1/4 | 7 1/8 |
| 762 | 845-750 | 172 | 193 | 6 3/4 | 7 5/8 |
| 812 | 845-800 | 184 | 206 | 7 1/4 | 8 1/8 |
| 862 | 845-850 | 197 | 219 | 7 3/4 | 8 5/8 |
| 912 | 845-900 | 210 | 232 | 8 1/4 | 9 1/8 |

TRIDON® Flex-Gear Clamps 847 Series
Larger, heavier gauge and precision formed Belleville springs

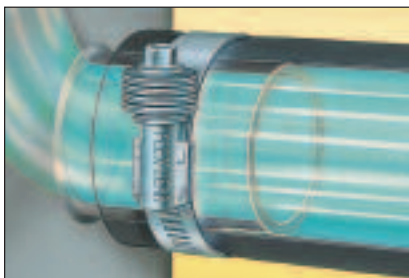
- Screw: 7.94mm (5/16") hex-head, 410 stainless steel
- Band: 14.29mm (9/16") band width, 300 stainless steel
- Liner: 300 stainless steel
- Housing: 300 stainless steel
- Springs: 300 stainless steel
- Installation Torque: 5.6 Nm; 50 in.-lbs.
- Ultimate Torque: 9.6 Min. Nm; 85 in.-lbs.



| SAE Sizes | Part No. | Min. Dia. (mm) | Max. Dia. (mm) | Min. Dia. (in.) | Max. Dia. (in.) |
|-----------|----------|----------------|----------------|-----------------|-----------------|
| 10 | 847-010 | 14 | 27 | 9/16 | 1 1/16 |
| 12 | 847-012 | 16 | 32 | 5/8 | 1 1/4 |
| 16 | 847-016 | 21 | 38 | 13/16 | 1 1/2 |
| 20 | 847-020 | 20 | 44 | 13/16 | 1 3/4 |
| 24 | 847-024 | 27 | 51 | 1 1/16 | 2 |
| 28 | 847-028 | 33 | 57 | 1 5/16 | 2 1/4 |
| 32 | 847-032 | 40 | 63 | 1 9/16 | 2 1/2 |
| 36 | 847-036 | 46 | 70 | 1 13/16 | 2 3/4 |
| 40 | 847-040 | 52 | 76 | 2 1/16 | 3 |
| 44 | 847-044 | 59 | 82 | 2 5/16 | 3 1/4 |
| 48 | 847-048 | 65 | 89 | 2 9/16 | 3 1/2 |



Non-compensating clamp cannot adjust during extreme temperature changes, allowing leaks to occur



Flex-Gear adjusts with the hose and fitting to maintain constant tension on the connection, eliminating leak paths

Bolt & Barrel Heavy Duty T-Bolt clamps provide uniform sealing pressure for a positive, reliable seal. Specifically designed for use in high vibration and large diameter applications. Typical applications include truck air intake systems, cold side charge air systems, off-road equipment and industrial machinery.

TRIDON® Bolt & Barrel 873 Series

All stainless steel.

TRIDON® Bolt & Barrel 872 Series

High-grade steel and stainless steel construction.

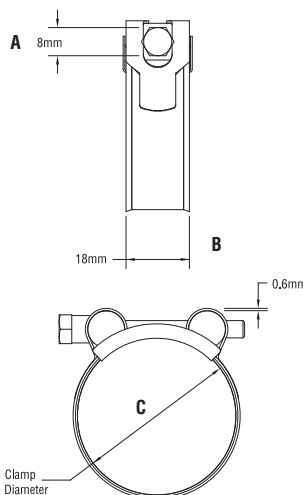
Zinc plated, clear finish.

Stainless steel band and bridge, steel bolt and barrels.

TRIDON® Bolt & Barrel 871 Series

High-grade steel construction.

Zinc plated, clear finish.



Bolt & Barrel Clamp

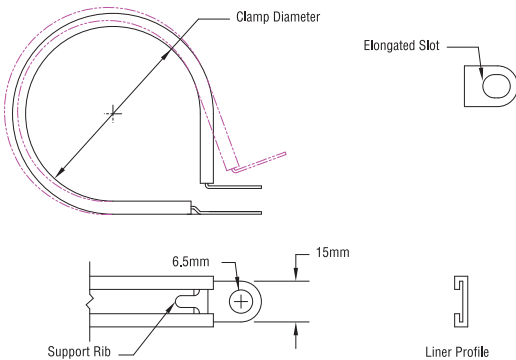


| Part No. 871 | Part No. 872 | Part No. 873 | C | | | | B | | A | |
|-----------------|-----------------|-----------------|-------------------|-------------------|--------------------|--------------------|------------|-------|-------------|-------|
| | | | Min. Dia. (mm) | Max. Dia. (mm) | Min. Dia. (in.) | Max. Dia. (in.) | Band Width | | Hex-Hd Size | |
| | | | | | | | (mm) | (in.) | (mm) | (in.) |
| 871-023 | 872-023 | 873-023 | 23 | 25 | 0.91 | 0.98 | 18 | 0.71 | 8 | 0.31 |
| 871-026 | 872-026 | 873-026 | 26 | 28 | 1.02 | 1.1 | 18 | 0.71 | 8 | 0.31 |
| 871-029 | 872-029 | 873-029 | 29 | 31 | 1.14 | 1.22 | 20 | 0.79 | 10 | 0.39 |
| 871-032 | 872-032 | 873-032 | 32 | 35 | 1.26 | 1.38 | 20 | 0.79 | 10 | 0.39 |
| 871-036 | 872-036 | 873-036 | 36 | 39 | 1.42 | 1.54 | 20 | 0.79 | 10 | 0.39 |
| 871-040 | 872-040 | 873-040 | 40 | 43 | 1.57 | 1.69 | 20 | 0.79 | 10 | 0.39 |
| 871-044 | 872-044 | 873-044 | 44 | 47 | 1.73 | 1.85 | 22 | 0.87 | 10 | 0.39 |
| 871-048 | 872-048 | 873-048 | 48 | 51 | 1.89 | 2.01 | 22 | 0.87 | 10 | 0.39 |
| 871-052 | 872-052 | 873-052 | 52 | 55 | 2.05 | 2.17 | 22 | 0.87 | 10 | 0.39 |
| 871-056 | 872-056 | 873-056 | 56 | 59 | 2.2 | 2.32 | 22 | 0.87 | 10 | 0.39 |
| 871-060 | 872-060 | 873-060 | 60 | 63 | 2.36 | 2.48 | 22 | 0.87 | 10 | 0.39 |
| 871-064 | 872-064 | 873-064 | 64 | 67 | 2.52 | 2.64 | 22 | 0.87 | 13 | 0.51 |
| 871-068 | 872-068 | 873-068 | 68 | 73 | 2.68 | 2.87 | 24 | 0.94 | 13 | 0.51 |
| 871-074 | 872-074 | 873-074 | 74 | 79 | 2.91 | 3.11 | 24 | 0.94 | 13 | 0.51 |
| 871-080 | 872-080 | 873-080 | 80 | 85 | 3.15 | 3.35 | 24 | 0.94 | 13 | 0.51 |
| 871-086 | 872-086 | 873-086 | 86 | 91 | 3.39 | 3.58 | 24 | 0.94 | 13 | 0.51 |
| 871-092 | 872-092 | 873-092 | 92 | 97 | 3.62 | 3.82 | 24 | 0.94 | 13 | 0.51 |
| 871-098 | 872-098 | 873-098 | 98 | 103 | 3.86 | 4.06 | 24 | 0.94 | 13 | 0.51 |
| 871-104 | 872-104 | 873-104 | 104 | 112 | 4.09 | 4.41 | 24 | 0.94 | 13 | 0.51 |
| 871-113 | 872-113 | 873-113 | 113 | 121 | 4.45 | 4.76 | 24 | 0.94 | 13 | 0.51 |
| 871-122 | 872-122 | 873-122 | 122 | 130 | 4.8 | 5.12 | 24 | 0.94 | 13 | 0.51 |
| 871-131 | 872-131 | 873-131 | 131 | 139 | 5.16 | 5.47 | 26 | 1.02 | 17 | 0.67 |
| 871-140 | 872-140 | 873-140 | 140 | 148 | 5.51 | 5.83 | 26 | 1.02 | 17 | 0.67 |
| 871-149 | 872-149 | 873-149 | 149 | 161 | 5.87 | 6.34 | 26 | 1.02 | 17 | 0.67 |
| 871-162 | 872-162 | 873-162 | 162 | 174 | 6.38 | 6.85 | 26 | 1.02 | 17 | 0.67 |
| 871-175 | 872-175 | 873-175 | 175 | 187 | 6.89 | 7.36 | 26 | 1.02 | 17 | 0.67 |
| 871-188 | 872-188 | 873-188 | 188 | 200 | 7.4 | 7.87 | 26 | 1.02 | 17 | 0.67 |
| 871-201 | 872-201 | 873-201 | 201 | 213 | 7.91 | 8.39 | 26 | 1.02 | 17 | 0.67 |
| 871-214 | 872-214 | 873-214 | 214 | 226 | 8.43 | 8.9 | 26 | 1.02 | 17 | 0.67 |
| 871-227 | 872-227 | 873-227 | 227 | 239 | 8.94 | 9.41 | 26 | 1.02 | 17 | 0.67 |
| 871-240 | 872-240 | 873-240 | 240 | 252 | 9.45 | 9.92 | 26 | 1.02 | 17 | 0.67 |
| 871-253 | 872-253 | 873-253 | 253 | 265 | 9.96 | 10.43 | 26 | 1.02 | 17 | 0.67 |
| 871-266 | 872-266 | 873-266 | 266 | 278 | 10.47 | 10.94 | 26 | 1.02 | 17 | 0.67 |
| 871-279 | 872-279 | 873-279 | 279 | 291 | 10.98 | 11.46 | 26 | 1.02 | 17 | 0.67 |
| 871-292 | 872-292 | 873-292 | 292 | 304 | 11.5 | 11.97 | 26 | 1.02 | 17 | 0.67 |

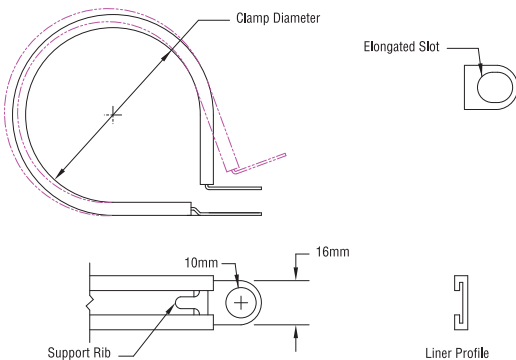
P-CLIPS



804 Series



805 Series



P-Clips are optimal for attaching and retaining hoses, pipes, cables, ducts and lines. Rubber coating and rounded tips prevent damage to soft hoses. Metal band retains shape and flexes without releasing its hold.

TRIDON® P-Clip 804 Series

15mm band width, 6mm hole diameter

Rubber coated steel

Rounded tips

| P-Clip Part No. | Dia. Closed (mm) | Dia. Closed (in.) |
|-----------------|------------------|-------------------|
| 804-004 | 4 | 0.16 |
| 804-006 | 6 | 0.24 |
| 804-009 | 9 | 0.35 |
| 804-010 | 10 | 0.39 |
| 804-012 | 12 | 0.47 |
| 804-013 | 13 | 0.51 |
| 804-015 | 15 | 0.59 |
| 804-016 | 16 | 0.63 |
| 804-018 | 18 | 0.71 |
| 804-019 | 19 | 0.75 |
| 804-020 | 20 | 0.79 |
| 804-022 | 22 | 0.87 |
| 804-025 | 25 | 0.98 |
| 804-027 | 27 | 1.06 |
| 804-029 | 29 | 1.14 |
| 804-032 | 32 | 1.26 |
| 804-035 | 35 | 1.38 |
| 804-038 | 38 | 1.49 |
| 804-040 | 40 | 1.57 |
| 804-045 | 45 | 1.77 |
| 804-048 | 48 | 1.89 |
| 804-050 | 50 | 1.97 |
| 804-055 | 55 | 2.16 |
| 804-057 | 57 | 2.24 |
| 804-060 | 60 | 2.36 |
| 804-064 | 64 | 2.52 |
| 804-066 | 66 | 2.60 |
| 804-070 | 70 | 2.75 |

TRIDON® P-Clip 805 Series

16mm band width, 10mm hole diameter

Rubber coated steel

Rounded tips

| P-Clip Part No. | Dia. Closed (mm) | Dia. Closed (in.) |
|-----------------|------------------|-------------------|
| 805-008 | 8 | 0.31 |
| 805-009 | 9 | 0.35 |
| 805-010 | 10 | 0.39 |
| 805-013 | 13 | 0.51 |
| 805-015 | 15 | 0.59 |
| 805-016 | 16 | 0.63 |
| 805-018 | 18 | 0.71 |
| 805-019 | 19 | 0.75 |
| 805-020 | 20 | 0.79 |
| 805-022 | 22 | 0.87 |
| 805-025 | 25 | 0.98 |
| 805-027 | 27 | 1.06 |
| 805-029 | 29 | 1.14 |
| 805-032 | 32 | 1.26 |
| 805-035 | 35 | 1.38 |
| 805-038 | 38 | 1.49 |
| 805-051 | 51 | 2.01 |

Tomkins

Industrial and Automotive



AirAwareTM

www.schraderbridgeport.com/tpms

Amflo[®]

www.plews-edelmann.com/amflo

EDELMANN[®]

www.plews-edelmann.com



Gates[®]

www.gates.com

PLEWSTM
lubriMatic

www.plews-edelmann.com



SCHRADERBRIDGEPORT[®]

www.schraderbridgeport.com



SCHRADERELECTRONICS[®]

www.schraderelectronics.com

Stant[®]

www.stant.com

TRIDON[®]

www.tridonclamps.eu

TRU-FLATE[®]

www.plews-edelmann.com

AirAware:

Tire Pressure Monitoring Systems (TPMS)

Amflo:

Air Line Accessories

Pneumatic Hoses

Edelmann:

Power Steering Hose Assemblies

Automotive Fittings

Brake Lines

Transmission Oil Cooler Lines & Fittings

Engine Oil Cooler Lines

UnicoilTM Hose Benders

Gates:

Belts & Hoses

Hydraulics

Plews/LubriMatic:

Oils, Greases & Spray Lubricants

Lubrication Equipment

Schrader-Bridgeport:

Air Compressors & Pressure Washers

Tire Valves (Passenger & Truck)

Schrader Electronics:

Tire Pressure Monitoring Systems (TPMS)

Stant:

Fuel, Radiator & Oil Filler Caps

Thermostats

Cooling & Fuel Cap Testers

Tridon:

Hose Clamps

T-Bolts

Tru-Flate:

Air Line Accessories

Tire Gauges & Hardware

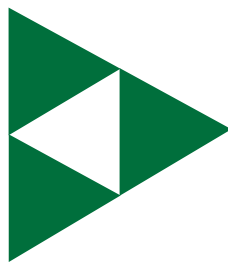
Camel[®] Tire Hardware & Repair

TRIDON®

WWW.TRIDONCLAMPS.EU



TRIDON® BRAND IS A REGISTERED TRADEMARK OF IDEAL – A TOMKINS COMPANY



DISTRIBUTED BY

IDEAL – A TOMKINS COMPANY

3200 PARKER DRIVE, ST. AUGUSTINE, FL, U.S.A.

TEL: 00.1.904.829.1000 • FAX: 00.1.904.825.1121

FOR SALES & CUSTOMER SERVICE, EMAIL INTLSERVICE@IDEAL-TRIDONCLAMPS.COM