

**Antivibranti cilindrici in acciaio inox AISI 304**  
***AISI 304 Stainless steel cylindrical mountings***

**A1X**



**GeTech**

### MMX series

**Caratteristiche**

**Materiale Corpo:**

Miscela Gomma NR/SBR

**Durezza standard:**

60 Shore A

**Tolleranza sulla durezza:**

+/- 5 SH

**A richiesta:**

Differenti lunghezze della Vite

**Parte Metallica e/o**

**Fissaggio:**

Vite e Rondella Inox AISI 304

**Tipo Inserto Standard:**

Vite pressata sulla Rondella

**Product specification**

**Main Part Material:**

NR/SBR Rubber Compound

**Standard Hardness:**

60 Shore A

**Hardness Tolerance:**

+/- 5 SH

**On request:**

Different Screw Lengths

**Metallic Part Material &**

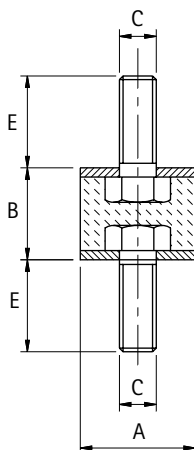
**Finishing:**

Stainless Steel Screw and

Washer AISI 304

**Standard Thread:**

Screw pressed on the washer



### Maschio/Maschio inox AISI 304

#### AISI 304 Stainless Steel Type A

(Double Male)

Codice	A	B	C	E	Carico max a Compres. daN Max Compression Load daN	Carico max a Taglio daN Max Shear Load daN	Confezione Pz Packing Pcs.
A1MMX1515	15	15	M4	14	15	2	1
A1MMX2015	20	15	M6	16	34	4	1
A1MMX2520/6	25	20	M6	18	45	5	1
A1MMX3030	30	30	M8	23	61	7	1
A1MMX4030/8	40	30	M8	23	98	15	1

### PMX series

**Caratteristiche**

**Materiale Corpo:**

Miscela Gomma NR/SBR

**Durezza standard:**

60 Shore A

**Tolleranza sulla durezza:**

+/- 5 SH

**A richiesta:**

Differenti lunghezze della Vite

**Parte Metallica e/o**

**Fissaggio:**

Vite e Rondella Inox AISI 304

**Tipo Inserto Standard:**

Vite pressata sulla Rondella

**Product specification**

**Main Part Material:**

NR/SBR Rubber Compound

**Standard Hardness:**

60 Shore A

**Hardness Tolerance:**

+/- 5 SH

**On request:**

Different Screw Lengths

**Metallic Part Material &**

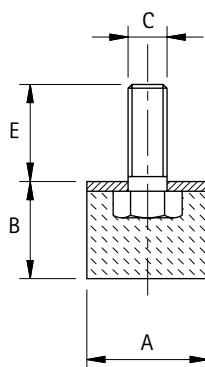
**Finishing:**

Stainless Steel Screw and

Washer AISI 304

**Standard Thread:**

Screw pressed on the washer



### Piedino/Maschio inox AISI 304

#### AISI 304 Stainless Steel Type D

(Male Footing)

Codice	A	B	C	E	Carico max a Compres. daN Max Compression Load daN	Confezione Pz Packing Pcs.
A1PMX1515	15	15	M4	14	15	1
A1PMX2015	20	15	M6	16	34	1
A1PMX2520/6	25	20	M6	18	45	1
A1PMX3030	30	30	M8	23	61	1
A1PMX4030/8	40	30	M8	23	98	1

**Antivibranti cilindrici in acciaio zincato**  
**Zinc plated cylindrical mountings**

**A1**



**GeTech**

## MM series

### Caratteristiche

#### Materiale Corpo:

Miscela Gomma NR/SBR

#### Durezza standard:

60 Shore A

#### Tolleranza sulla durezza:

+/- 5 SH

#### A richiesta:

Differenti lunghezze della Vite

#### Parte Metallica e/o

#### Fissaggio:

Vite e Rondella Zincate

#### Tipo Inserto Standard:

Vite pressata sulla Rondella

### Product specification

#### Main Part Material:

NR/SBR Rubber Compound

#### Standard Hardness:

60 Shore A

#### Hardness Tolerance:

+/- 5 SH

#### On request:

Different Screw Lengths

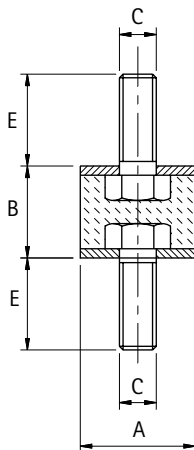
#### Metallic Part Material &

#### Finishing:

Zinc Plated Screw and Washer

#### Standard Thread:

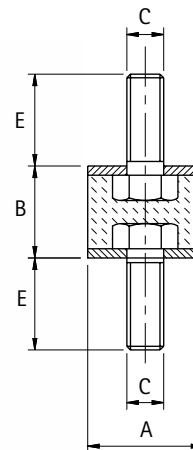
Screw pressed on the washer



## Maschio/Maschio Type A (Double Male)

Codice	A	B	C	E	Carico max a Compres. daN Max Compression Load daN	Carico max a Taglio daN Max Shear Load daN	Confezione Pz Packing Pcs.
A1MM1310	13	10	M5	10	15	2	1
A1MM1510	15	10	M4	10	15	2	1
A1MM1515	15	15	M4	14	15	2	1
A1MM1515L	15	15	M4	19	15	2	1
A1MM2010	20	10	M6	16	36	3	1
A1MM2015	20	15	M6	16	34	4	1
A1MM2020	20	20	M6	16	34	2	1
A1MM2025	20	25	M6	16	24	2	1
A1MM2030	20	30	M6	16	24	3	1
A1MM2510	25	10	M6	20	35	5	1
A1MM2515	25	15	M6	18	35	5	1
A1MM2520/6	25	20	M6	18	45	5	1
A1MM2520/8	25	20	M8	20	45	5	1
A1MM2525	25	25	M6	18	40	5	1
A1MM2530/6	25	30	M6	18	34	3	1
A1MM2530/8	25	30	M8	20	34	3	1
A1MM3015	30	15	M8	23	42	9	1
A1MM3020-15	30	20	M8	15	66	9	1
A1MM3020	30	20	M8	23	66	9	1
A1MM3025	30	25	M8	20	66	9	1
A1MM3030	30	30	M8	23	61	7	1
A1MM3040	30	40	M8	23	55	5	1
A1MM4020	40	20	M8	23	63	12	1
A1MM4030/10	40	30	M10	28	98	15	1
A1MM4030/8	40	30	M8	23	98	15	1
A1MM4035	40	35	M8	23	88	13	1
A1MM4040/10	40	40	M10	28	107	13	1
A1MM4040/8	40	40	M8	23	107	13	1
A1MM5020	50	20	M10	28	168	21	1
A1MM5030	50	30	M10	28	158	19	1
A1MM5040	50	40	M10	28	143	17	1
A1MM5045	50	45	M10	28	136	16	1
A1MM5050	50	50	M10	28	133	13	1
A1MM6030/12	60	30	M12	37	172	36	1
A1MM6040/12	60	40	M12	37	169	28	1
A1MM6050/10	60	50	M10	35	199	24	1
A1MM6050/12	60	50	M12	37	199	24	1
A1MM6535	65	35	M12	37	300	46	1
A1MM6550	65	50	M12	37	230	23	1
A1MM7040/10	70	40	M10	28	210	40	1
A1MM7050/10	70	50	M10	28	230	55	1
A1MM7050/12	70	50	M12	37	230	55	1
A1MM7525	75	25	M12	37	382	89	1
A1MM7540	75	40	M12	37	377	79	1
A1MM7550	75	50	M12	37	372	69	1
A1MM10030	100	30	M16	45	700	110	1
A1MM10040	100	40	M16	45	685	99	1
A1MM10050	100	50	M16	45	560	99	1
A1MM10055	100	55	M16	45	635	79	1
A1MM10060	100	60	M16	45	587	49	1

## Maschio/Maschio a Gomma Tenera Soft Type A (Double Male)



## MMT series

### Caratteristiche

#### Materiale Corpo:

Miscela Gomma NR/SBR

#### Durezza standard:

45 Shore A

#### Tolleranza sulla durezza:

+/- 5 SH

#### A richiesta:

Differenti lunghezze della Vite

#### Parte Metallica e/o

Vite e Rondella Zincate

#### Fissaggio:

Vite e Rondella Zincate

#### Tipo Insero Standard:

Vite pressata sulla Rondella

#### Product specification

#### Main Part Material:

NR/SBR Rubber Compound

#### Standard Hardness:

45 Shore A

#### Hardness Tolerance:

+/- 5 SH

#### On request:

Different Screw Lengths

#### Metallic Part Material & Finishing:

Zinc Plated Screw and Washer

#### Standard Thread:

Screw pressed on the washer

Codice	A	B	C	E	Carico max a Compres. daN Max Compression Load daN	Carico max a Taglio daN Max Shear Load daN	Confezione Pz Packing Pcs.
A1MMT2520	15	20	M6	18	27	3,3	1
A1MMT3015	30	15	M8	23	34	3,8	1
A1MMT3020	30	20	M8	23	40	6	1
A1MMT3030	30	30	M8	23	37	4,7	1
A1MMT4030	40	30	M8	23	59	10	1
A1MMT4040	40	40	M8	23	73	10	1
A1MMT5030	50	30	M10	28	95	13	1
A1MMT5040	50	40	M10	28	88	11	1

## MF series

### Caratteristiche

#### Materiale Corpo:

Miscela Gomma NR/SBR

#### Durezza standard:

60 Shore A

#### Tolleranza sulla durezza:

+/- 5 SH

#### A richiesta:

Differenti lunghezze della Vite,  
Inserto Femmina Passante

#### Parte Metallica e/o

#### Fissaggio:

Rondella Sabbziata e Zincata

#### Tipo Inserto Standard:

Vite Zincata, Inserto Femmina  
Cieco

#### Product specification

#### Main Part Material:

NR/SBR Rubber Compound

#### Standard Hardness:

60 Shore A

#### Hardness Tolerance:

+/- 5 SH

#### On request:

Different Screw Lengths,  
Threaded Thru-Hole

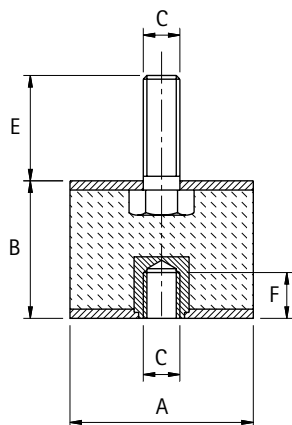
#### Metallic Part Material &

#### Finishing:

Zinc Plated Washers

#### Standard Thread:

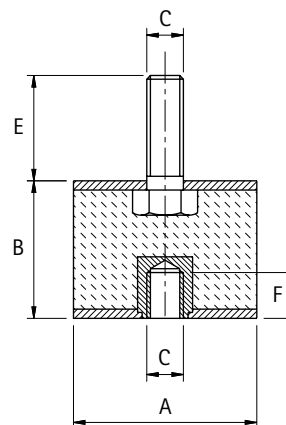
Zinc Plated Screw, Threaded  
Blind Hole



## Maschio/Femmina Type B (Male/Female)

Codice	A	B	C	E	F	Carico max a Compres. daN Max Compression Load daN	Carico max a Taglio daN Max Shear Load daN	Confezione Pz Packing Pcs.
A1MF1515	15	15	M4	14	4	15	3	1
A1MF2015	20	15	M6	16	6	34	3	1
A1MF2020	20	20	M6	16	6	29	2	1
A1MF2025	20	25	M6	16	6	19	2	1
A1MF2030	20	30	M6	16	6	15	2	1
A1MF2515S	25	15	M6	8	6	40	6	1
A1MF2515	25	15	M6	18	6	40	6	1
A1MF2520/6	25	20	M6	18	8	45	5	1
A1MF2520/8	25	20	M8	20	8	45	5	1
A1MF2525	25	25	M6	18	8	40	4	1
A1MF2530	25	30	M6	18	8	35	3	1
A1MF3015	30	15	M8	18	8	58	10	1
A1MF3020	30	20	M8	23	6	66	9	1
A1MF3020-14	30	20	M8	14	6	66	9	1
A1MF3030	30	30	M8	23	10	61	7	1
A1MF3040	30	40	M8	23	10	54	5	1
A1MF4020	40	20	M8	23	6	88	16	1
A1MF4030/10	40	30	M10	28	10	98	15	1
A1MF4030/8	40	30	M8	23	10	98	15	1
A1MF4035	40	35	M8	23	10	88	13	1
A1MF4040/10	40	40	M10	28	10	108	13	1
A1MF4040/8	40	40	M8	23	10	108	13	1
A1MF5020	50	20	M10	28	10	169	21	1
A1MF5030	50	30	M10	28	10	159	20	1
A1MF5040	50	40	M10	28	10	144	18	1
A1MF5050	50	50	M10	28	10	134	14	1
A1MF6030/12	60	30	M12	37	11	228	40	1
A1MF6035/10	60	35	M10	28	10	228	40	1
A1MF6040/12	60	40	M12	28	11	214	30	1
A1MF6050/10	60	50	M10	35	10	200	24	1
A1MF6050/12	60	50	M12	37	11	200	24	1
A1MF6535	65	35	M12	37	11	300	46	1
A1MF6550	65	50	M12	37	11	230	23	1
A1MF7050/12	70	50	M12	37	11	280	38	1
A1MF7525	75	25	M12	37	11	382	89	1
A1MF7540	75	40	M12	37	11	378	78	1
A1MF7550	75	50	M12	37	11	373	68	1
A1MF10030	100	30	M16	45	16	720	110	1
A1MF10040	100	40	M16	45	16	686	98	1
A1MF10050	100	50	M16	45	16	660	98	1
A1MF10055	100	55	M16	45	16	636	78	1
A1MF10060	100	60	M16	45	16	586	48	1

## Maschio/Femmina a Gomma Tenera Soft type B (Male/Female)



## MFT series

### Caratteristiche

#### Materiale Corpo:

Miscela Gomma NR/SBR

#### Durezza standard:

45 Shore A

#### Tolleranza sulla durezza:

+/- 5 SH

#### A richiesta:

Differenti lunghezze della Vite,  
Insero Femmina Passante

#### Parte Metallica e/o

#### Fissaggio:

Rondella Sabbata e Zincata

#### Tipo Insero Standard:

Vite Zincata,  
Insero Femmina Cieco

#### Product specification

#### Main Part Material:

R/SBR Rubber Compound

#### Standard Hardness:

45 Shore A

#### Hardness Tolerance:

+/- 5 SH

#### On request:

Different Screw Lengths,  
Threaded Thru-Hole

#### Metallic Part Material &

#### Finishing:

Zinc Plated Washers

#### Standard Thread:

Zinc Plated Screw, Threaded  
Blind Hole

Codice	A	B	C	E	F	Carico max a Compres. daN Max Compression Load daN	Carico max a Taglio daN Max Shear Load daN	Confezione Pz Packing Pcs.
A1MFT2025	20	25	M6	16	6	11	1,3	1
A1MFT2520	25	20	M6	18	8	27	3,3	1
A1MFT3030	30	30	M8	23	10	37	4,7	1
A1MFT4030	40	30	M8	23	10	59	10	1
A1MFT5030	50	30	M10	28	10	95	13	1
A1MFT5035	50	35	M10	28	10	95	13	1
A1MFT5050	50	50	M10	28	10	80	9,4	1
A1MFT6035	60	35	M10	30	10	137	27	1
A1MFT7550	75	50	M12	37	11	224	45	1

## FF series

### Caratteristiche

#### Materiale Corpo:

Miscela Gomma NR/SBR

#### Durezza standard:

60 Shore A

#### Tolleranza sulla durezza:

+/- 5 SH

#### A richiesta:

Insero Femmina Passante

#### Parte Metallica e/o

#### Fissaggio:

Rondella Sabbiata e Zincata

#### Tipo Insero Standard:

Insero Femmina Cieco

### Product specification

#### Main Part Material:

NR/SBR Rubber Compound

#### Standard Hardness:

60 Shore A

#### Hardness Tolerance:

+/- 5 SH

#### On request:

Threaded Thru-Hole

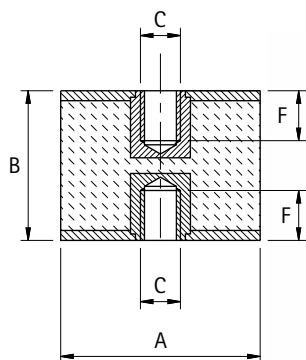
#### Metallic Part Material &

#### Finishing:

Zinc Plated Washers

#### Standard Thread:

Threaded Blind Hole



## Femmina/Femmina Type C (Double Female)

Codice	A	B	C	F	Carico max a Compres. daN Max Compression Load daN	Carico max a Taglio daN Max Shear Load daN	Confezione Pz Packing Pcs.
A1FF1515	15	15	M4	4	15	2	1
A1FF2020	20	20	M6	6	20	2	1
A1FF2025	20	25	M6	6	18	2	1
A1FF2030	20	30	M6	6	16	2	1
A1FF2520	25	20	M6	8	45	5	1
A1FF2525	25	25	M6	8	42	4	1
A1FF2530	25	30	M6	8	35	3	1
A1FF3020	30	20	M8	6	66	9	1
A1FF3030	30	30	M8	10	61	8	1
A1FF3040	30	40	M8	10	54	5	1
A1FF4030/10	40	30	M10	10	98	15	1
A1FF4030/8	40	30	M8	10	98	15	1
A1FF4035/8	40	35	M8	10	108	13	1
A1FF4040/10	40	40	M10	10	108	13	1
A1FF4040/8	40	40	M8	10	108	13	1
A1FF5030	50	30	M10	10	169	19	1
A1FF5040	50	40	M10	10	144	17	1
A1FF5050	50	50	M10	10	134	13	1
A1FF6030/10	60	30	M10	10	210	30	1
A1FF6030/12	60	30	M12	12	210	30	1
A1FF6040/12	60	40	M12	11	210	30	1
A1FF6050/10	60	50	M10	10	200	24	1
A1FF7530	75	30	M12	12	390	90	1
A1FF7540	75	40	M12	12	378	78	1
A1FF7550	75	50	M12	12	373	68	1
A1FF10050	100	50	M16	14	660	98	1
A1FF10055	100	55	M16	14	636	78	1
A1FF10060	100	60	M16	14	590	49	1

## PF series

### Caratteristiche

#### Materiale Corpo:

Miscela Gomma NR/SBR

#### Durezza standard:

60 Shore A

#### Tolleranza sulla durezza:

+/- 5 SH

#### A richiesta:

Altre Durezze

#### Parte Metallica e/o

#### Fissaggio:

Rondella Sabbiata e Zincata

#### Tipo Insero Standard:

Insero Femmina Cieco

### Product specification

#### Main Part Material:

NR/SBR Rubber Compound

#### Standard Hardness:

60 Shore A

#### Hardness Tolerance:

+/- 5 SH

#### On request:

Other Hardnesses

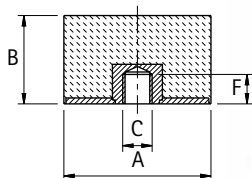
#### Metallic Part Material &

#### Finishing:

Zinc Plated Washers

#### Standard Thread:

Threaded Blind Hole

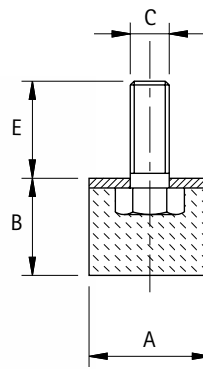


## A1 Antivibranti Cilindrici Type E (Female Footing)

Codice	A	B	C	F	Carico max a Compres. daN Max Compression Load daN	Confezione Pz Packing Pcs.
A1PF2518	25	18	M6	9	29	1
A1PF2520	25	20	M6	8	29	1
A1PF3020	30	20	M8	6	42	1
A1PF4030	40	30	M8	10	75	1
A1PF5020	50	20	M10	10	117	1
A1PF5030	50	30	M10	9	117	1



## Piedino/Maschio Type D (Male Footing)



## PM series

### Caratteristiche

**Materiale Corpo:**  
Mescola Gomma NR/SBR

**Durezza standard:**  
60 Shore A

**Tolleranza sulla durezza:**  
+/- 5 SH

**A richiesta:**  
Differenti lunghezze della Vite

**Parte Metallica e/o**

**Fissaggio:**  
Vite e Rondella Zincate

**Tipo Inserto Standard:**  
Vite pressata sulla Rondella

### Product specification

**Main Part Material:**  
NR/SBR Rubber Compound

**Standard Hardness:**  
60 Shore A

**Hardness Tolerance:**  
+/- 5 SH

**On request:**  
Different Screw Lengths

**Metallic Part Material &**

**Finishing:**  
Zinc Plated Screw and Washer

**Standard Thread:**  
Screw pressed on the washer

Code	A	B	C	E	Max. Druckbelastung daN Max Compression Load daN	Verpackungseinheit Stk. Packing Pcs.
A1PM1510	15	10	M4	10	10	1
A1PM1515	15	15	M4	14	10	1
A1PM1610	16	10	M5	12	12	1
A1PM2010	20	10	M6	16	16	1
A1PM2015	20	15	M6	16	18	1
A1PM2020	20	20	M6	16	18	1
A1PM2025	20	25	M6	16	18	1
A1PM2030	20	30	M6	16	16	1
A1PM2515	25	15	M6	18	29	1
A1PM2520/6	25	20	M6	18	29	1
A1PM2520/8	25	20	M8	20	29	1
A1PM2525	25	25	M6	18	29	1
A1PM2530/6	25	30	M6	18	29	1
A1PM2530/8	25	30	M8	20	29	1
A1PM2530/8L	25	30	M8	30	29	1
A1PM3010/6	30	10	M6	20	42	1
A1PM3010	30	10	M8	23	42	1
A1PM3015	30	15	M8	23	42	1
A1PM3020	30	20	M8	23	42	1
A1PM3025	30	25	M8	23	42	1
A1PM3030	30	30	M8	23	38	1
A1PM3040	30	40	M8	23	38	1
A1PM4020	40	20	M8	23	57	1
A1PM4030/10	40	30	M10	28	75	1
A1PM4030/8	40	30	M8	23	75	1
A1PM4035/8	40	35	M8	23	75	1
A1PM4040/10	40	40	M10	28	75	1
A1PM4040/8	40	40	M8	23	75	1
A1PM5020	50	20	M10	28	117	1
A1PM5030	50	30	M10	28	117	1
A1PM5040	50	40	M10	28	117	1
A1PM5045	50	45	M10	28	117	1
A1PM5050	50	50	M10	28	117	1
A1PM6020/12	60	20	M12	37	169	1
A1PM6030/12	60	30	M12	37	169	1
A1PM6040/12	60	40	M12	37	169	1
A1PM6050/10	60	50	M10	35	169	1
A1PM6050/12	60	50	M12	37	169	1
A1PM7525	75	25	M12	37	265	1
A1PM7540	75	40	M12	37	265	1
A1PM7550	75	50	M12	37	265	1
A1PM10040	100	40	M16	45	471	1
A1PM10050	100	50	M16	45	471	1
A1PM10080	100	80	M16	57	380	1

## PMT series

### Caratteristiche

#### Materiale Corpo:

Miscela Gomma NR/SBR

#### Durezza standard:

45 Shore A

#### Tolleranza sulla durezza:

+/- 5 SH

#### A richiesta:

Differenti lunghezze della Vite

#### Parte Metallica e/o

#### Fissaggio:

Vite e Rondella Zincate

#### Tipo Inserto Standard:

Vite pressata sulla Rondella

### Product specification

#### Main Part Material:

NR/SBR Rubber Compound

#### Standard Hardness:

60 Shore A

#### Hardness Tolerance:

+/- 5 SH

#### On request:

Different Screw Lengths

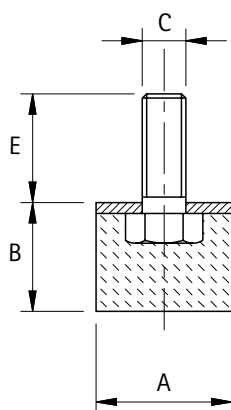
#### Metallic Part Material &

#### Finishing:

Zinc Plated Screw and Washer

#### Standard Thread:

Screw pressed on the washer



## Piedino/Maschio a gomma tenera Soft Type D (Male Footing)



Codice	A	B	C	E	Carico max a Compres. daN Max Compression Load daN	Confezione Pz Packing Pcs.
A1PMT3020	30	20	M8	23	30	1
A1PMT4030	40	30	M8	23	55	1
A1PMT4040	40	40	M8	23	55	1
A1PMT5040	50	40	M10	28	85	1

**Supporti antivibranti con altre forme**  
***Antivibration mountings with other shapes***

**A2**



## MS series

### Caratteristiche

#### Materiale Corpo:

Miscela Gomma NR/SBR

#### Durezza standard:

60 Shore A

#### Tolleranza sulla durezza:

+/- 5 SH

#### A richiesta:

Differenti lunghezze della Vite

#### Parte Metallica e/o

#### Fissaggio:

Vite e Rondella Zincate

#### Tipo Inserto Standard:

Vite pressata sulla Rondella

### Product specification

#### Main Part Material:

NR/SBR Rubber Compound

#### Standard Hardness:

60 Shore A

#### Hardness Tolerance: +/- 5 SH

#### On request:

Different Screw Lengths

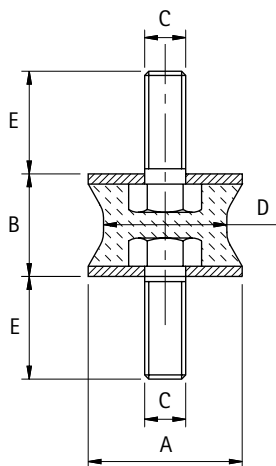
#### Metallic Part Material &

#### Finishing:

Zinc Plated Screw and Washer

#### Standard Thread:

Screw pressed on the washer



## Antivibrante Sgolato Maschio/Maschio Sand-Glass Mounting



Codice	A	B	C	D	E	Carico max a Compres. daN Max Compression Load daN	Carico max a Taglio daN Max Shear Load daN	Confezione Pz Packing Pcs.
A2MS12	12	15	M4	7	10	3	0,8	1
A2MS25	25	20	M6	10	18	50	3	1
A2MS30	30	20	M8	24	23	60	10	1
A2MS40	40	30	M8	19	20	80	6	1
A2MS40L	40	30	M8	27	20	100	8	1

## CN series

### Caratteristiche

#### Materiale Corpo:

Miscela Gomma NR/SBR

#### Durezza standard:

60 Shore A

#### Tolleranza sulla durezza:

+/- 5 SH

#### A richiesta:

Differenti lunghezze della Vite

#### Parte Metallica e/o

#### Fissaggio:

Vite e Rondella Zincate

#### Tipo Inserto Standard:

Vite pressata sulla Rondella

### Product specification

#### Main Part Material:

NR/SBR Rubber Compound

#### Standard Hardness:

60 Shore A

#### Hardness Tolerance:

+/- 5 SH

#### On request:

Different Screw Lengths

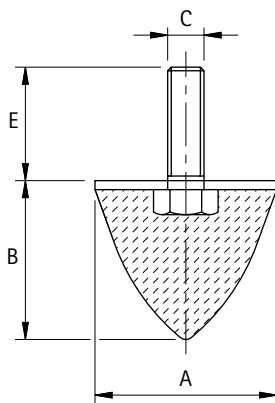
#### Metallic Part Material &

#### Finishing:

Zinc Plated Screw and Washer

#### Standard Thread:

Screw pressed on the washer

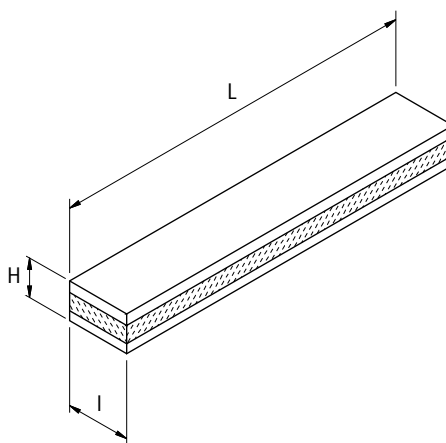


## Antivibrante Conico Shock - Absorber



Codice	A	B	C	E	Carico max a Compres. daN Max Compression Load daN	Confezione Pz Packing Pcs.
A2CN24	25	22	M6	20	20	1
A2CN26	25	30	M6	18	18	1
A2CN31	30	36	M8	23	25	1
A2CN39	40	30	M8	23	29	1
A2CN41	40	60	M8	23	28	1
A2CN51	50	50	M10	28	54	1
A2CN52	50	64	M8	35	50	1
A2CN61	60	60	M12	33	72	1
A2CN75	75	70	M12	37	117	1
A2CN100	100	85	M16	46	330	1

## Barra Antivibrante Antivibration Bar

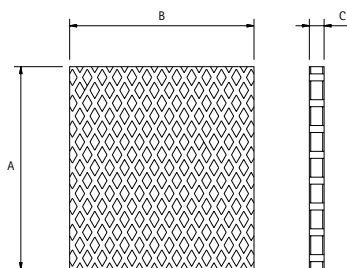


Codice	H	I	L	Spessore Ferri mm Thickness Metal Plates mm	Carico max a Compres. daN Max Compression Load daN	Confezione Pz Packing Pcs.
A2B50L	50	50	1000	10	14 / cm <sup>2</sup>	1
A2B60L	60	60	1000	10	14 / cm <sup>2</sup>	1
A2B80L	60	80	1000	10	14 / cm <sup>2</sup>	1
A2B100L	60	100	1000	10	14 / cm <sup>2</sup>	1

## B series

**Caratteristiche**  
**Materiale Corpo:**  
 Mescola Gomma NR/SBR  
**Durezza standard:**  
 60 Shore A  
**Tolleranza sulla durezza:**  
 +/- 5 SH  
**Parte Metallica e/o Fissaggio:**  
 Fe 36 zincato  
**Product specification**  
**Main Part Material:**  
 NR/SBR Rubber Compound  
**Standard Hardness:**  
 60 Shore A  
**Hardness Tolerance:**  
 +/- 5 SH  
**Metallic Part Material & Finishing:**  
 Zinc Plated Iron

## Lastra in Gomma Rubber Plate

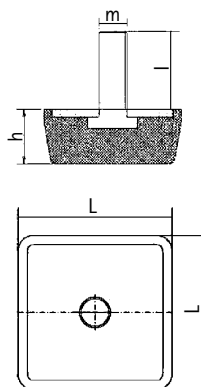


## CQ 200 series

**Caratteristiche**  
**Materiale Corpo:**  
 Mescola Gomma NBR  
**Product specification**  
**Main Part Material:**  
 NBR Rubber Compound

Codice	A	B	C	Carico max a Compres. daN Max Compression Load daN	Confezione Pz Packing Pcs.
A2CQ200	220	201	16	15 / cm <sup>2</sup>	1

## Supporto Antivibrante base quadra Square Base Support



## CQ series

**Caratteristiche**  
**Materiale Corpo:**  
 Mescola Gomma NBR  
**Durezza standard**  
 70 Shore A  
**Tolleranza sulla durezza**  
 +/- 5 SH  
**A richiesta**  
 Durezza 45 Shore A  
**Parte Metallica e/o Fissaggio**  
 Lamiera acciaio zincata

**Product specification**  
**Main Part Material:**  
 NBR Rubber Compound  
**Standard Hardness**  
 70 Shore A  
**Hardness Tolerance**  
 +/- 5 SH  
**On request**  
 45 Shore A Hardness  
**Metallic Part Material & Finishing**  
 Zinc Plated Steel Sheet

Codice	h	I	L	m	Carico max Statico daN Maximum Load daN	Confezione Pz Packing Pcs.
A2CQ80	30	27	80	10	450	1
A2CQ120	30	36	120	12	900	1